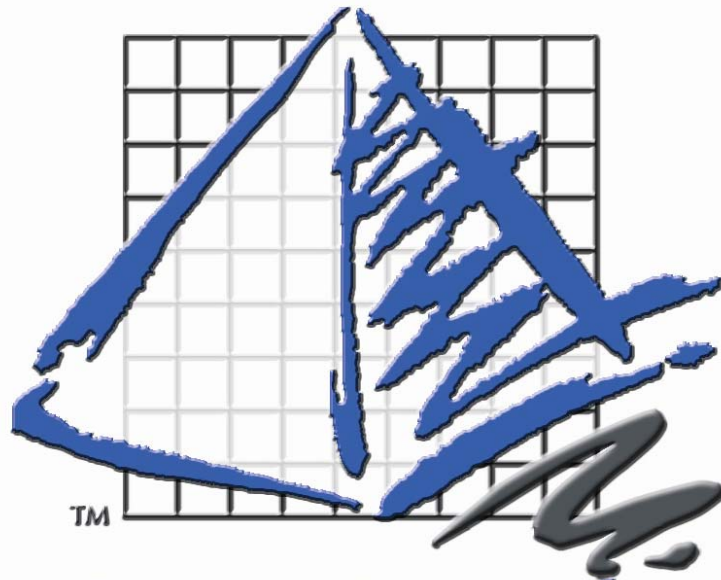


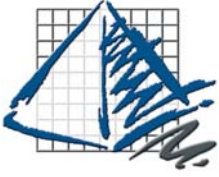
# ProjectSymbols Installation Guide

ProjectSymbols



ProjectSymbols™

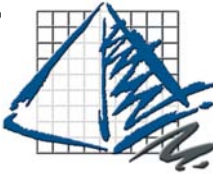
Version 4



# ProjectSymbols Installation Guide

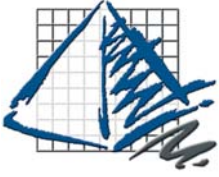
ProjectSymbols

# Table of Contents



## TABLE OF CONTENTS

<b>PSPLACE (V4) INSTALLATION</b>	<b>4</b>
<b>Introduction:</b>	<b>4</b>
<b>PSPlace (v4) Installation Instructions</b>	<b>5</b>
<b>PROJECTSYMBOLS INSTALLATION</b>	<b>13</b>
<b>Introduction:</b>	<b>13</b>
<b>Symbols Installation Instructions</b>	<b>14</b>
<b>APPENDIX A</b>	<b>23</b>
<b>TROUBLESHOOTING</b>	<b>24</b>
<b>NOTES</b>	<b>25</b>



# PSPlace (v4) Installation

## PSPlace (v4) Installation

### Introduction:

The installation processes for PSPlace (v4) and ProjectSymbols have changed. Please read this guide carefully when upgrading to the new versions of the software. The changes allow for easier symbols updates and complete network integration.

Enhancements have been made to all of the symbols libraries. PSPlace (v4) only accepts the new format for symbols. Enhancements have been made to all of the symbols libraries. These enhancements require some additional configuration files. ***You will need to update all of your symbols libraries for these changes to take effect. Failure to do so will cause the symbols to not work properly.***

If you are using AutoCAD 2007 and you use any of the ProjectMatrix Toolpaks (Panel Builders), you will need to update each one as well. The new features available in PSPlace (v4) will not work correctly unless each Toolpak is updated.

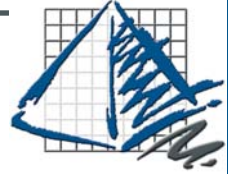
### New Features:

The addition of optioning and re-optioning of parts is now available in PSPlace (v4). Please follow the instructions below to install the software.

### \*\*\*NOTE\*\*\*

When installing PSPlace (v4) the user must have Administrator or Power User rights. If this is not possible, some directories must be manually set to allow read/write access. Please see the Troubleshooting section of this guide for more details.

# PSPlace (v4) Installation



## PSPlace (v4) Installation Instructions

1. ***Make sure that AutoCAD and all ProjectMatrix software is shut-down.*** Insert your ProjectMatrix DVD and choose the **ProjectSymbols** button on the Main Setup Window.

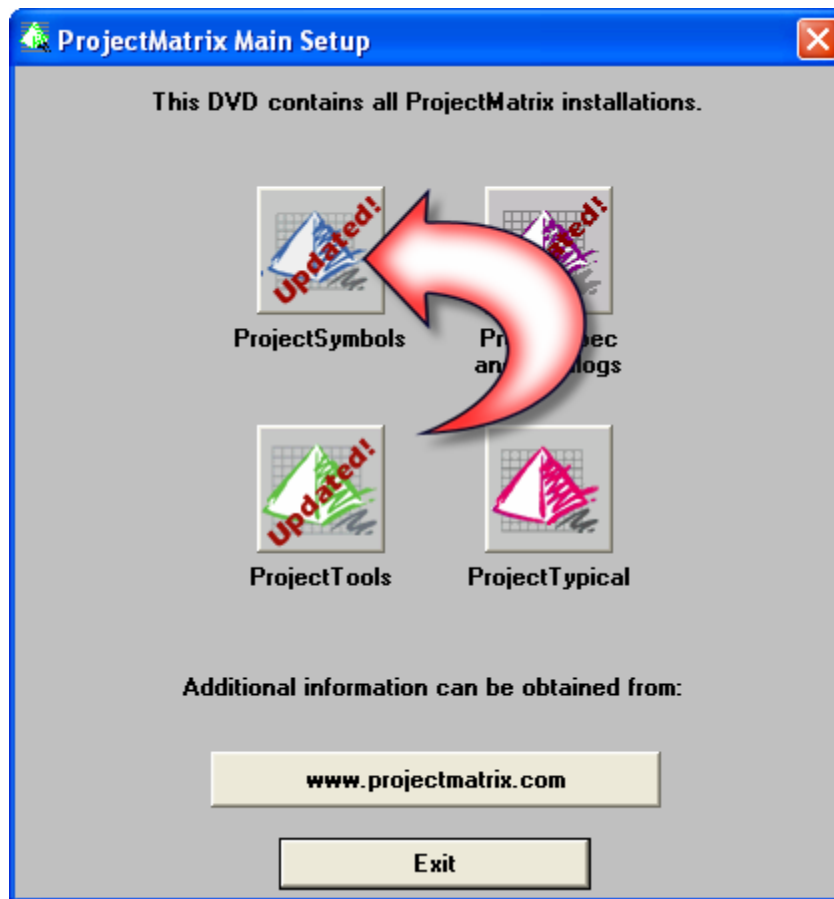
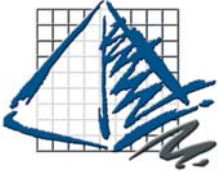


Figure 1-A



# PSPlace (v4) Installation

2. Click the **ProjectSymbols (Symbols4) button** in the ProjectSymbols Installation Window

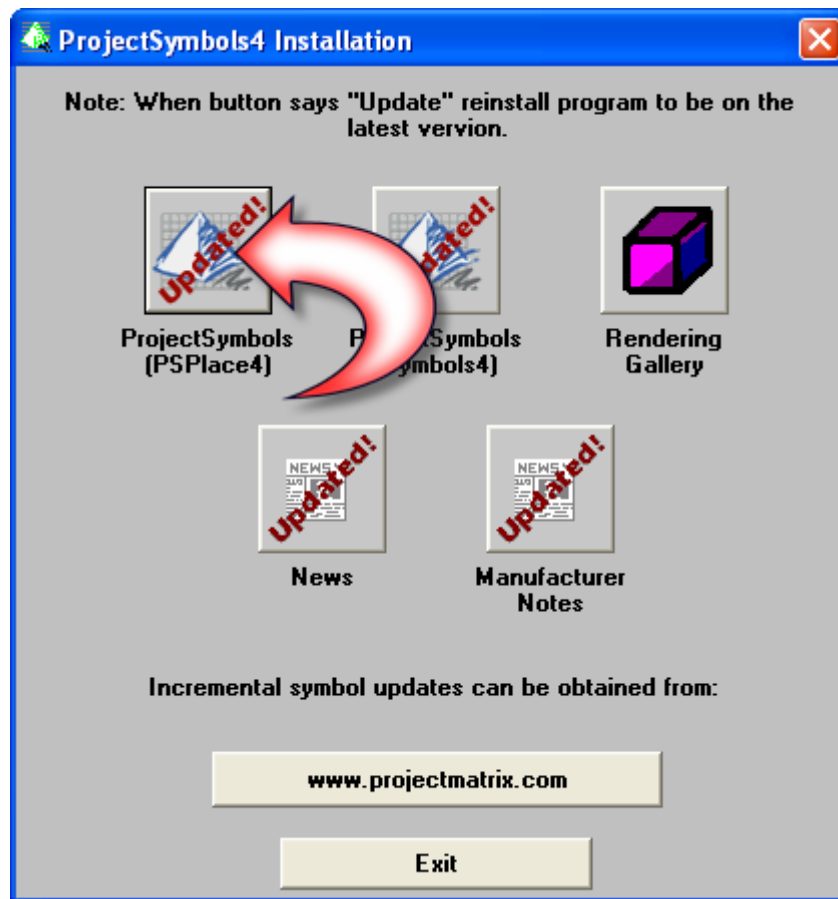
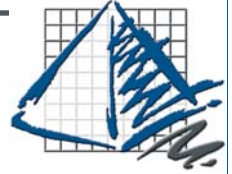


Figure 2-A

# PSPlace (v4) Installation



3. If you have previously installed the ProjectSymbols software and wish to keep your current settings choose **Yes**. If you have made changes to the location of your symbols, or if you have recently updated or added any new versions of AutoCAD please choose **No**.

If you chose **Yes**, the install will uncompress the files and the setup will complete.

If you chose **No** or this is a first time install please continue to follow the instructions listed below.

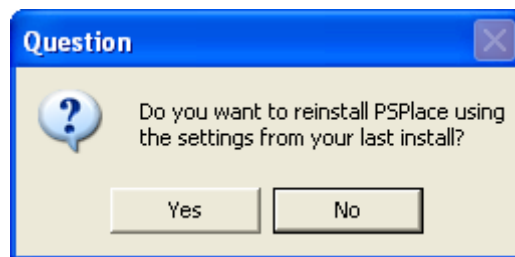


Figure 3-A

4. The welcome screen will appear. Click **Next** to continue.

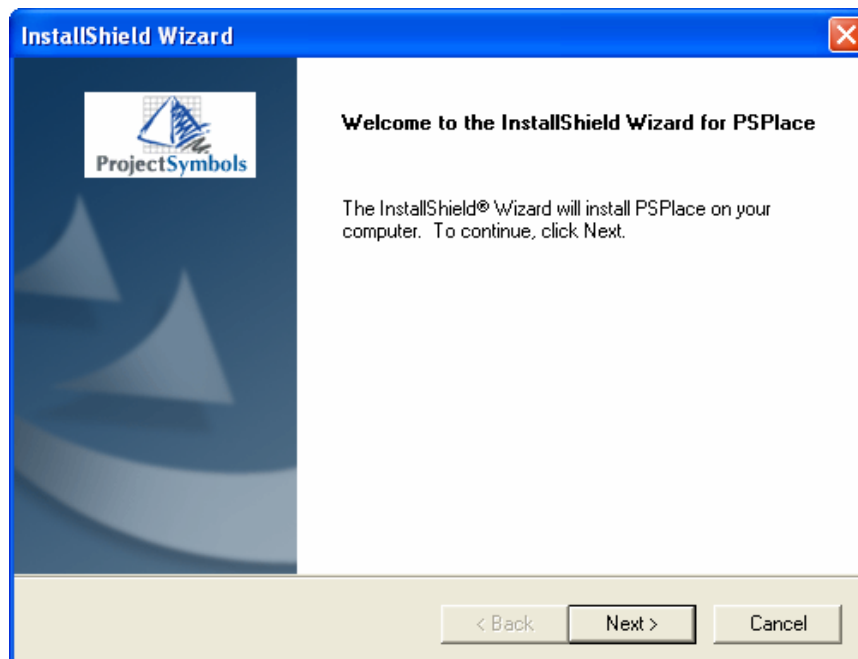
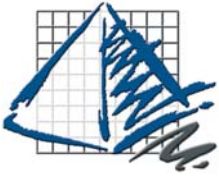


Figure 4-A



# PSPlace (v4) Installation

5. Read the license agreement carefully and click **Yes** to accept it.

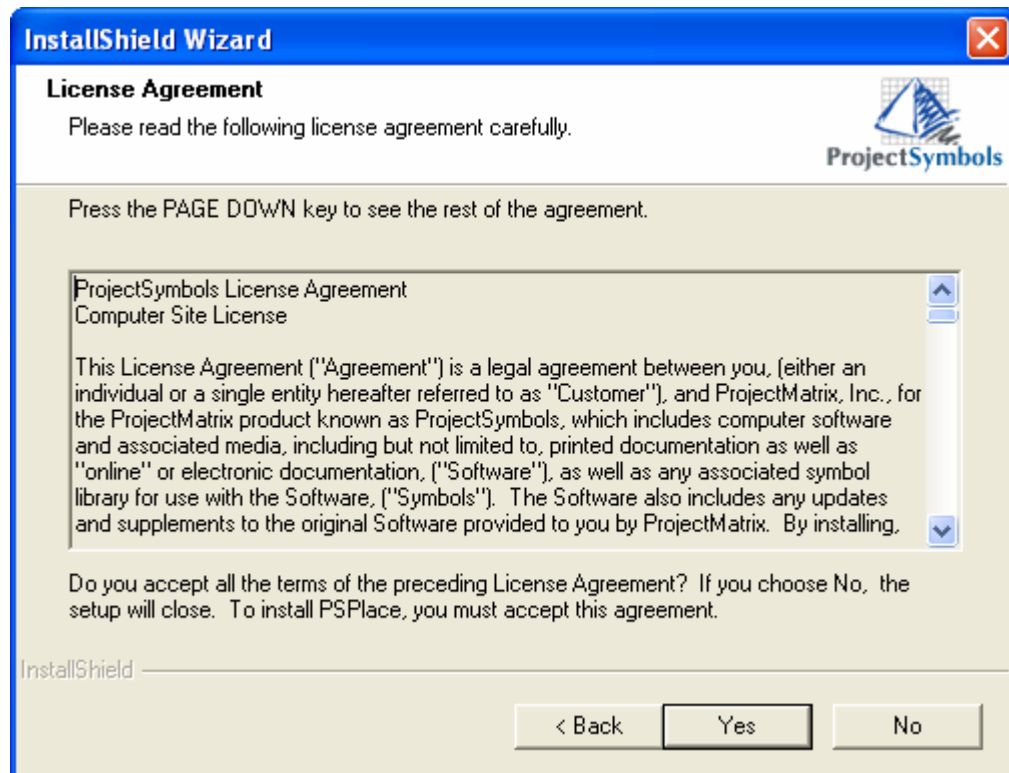
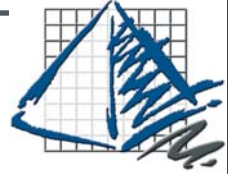


Figure 5-A



# PSPlace (v4) Installation



6. Confirm the destination path and click **Next**.

*If you have chose to install PSPlace (v4) to more than one version of AutoCAD you may have to repeat this step for each version.*

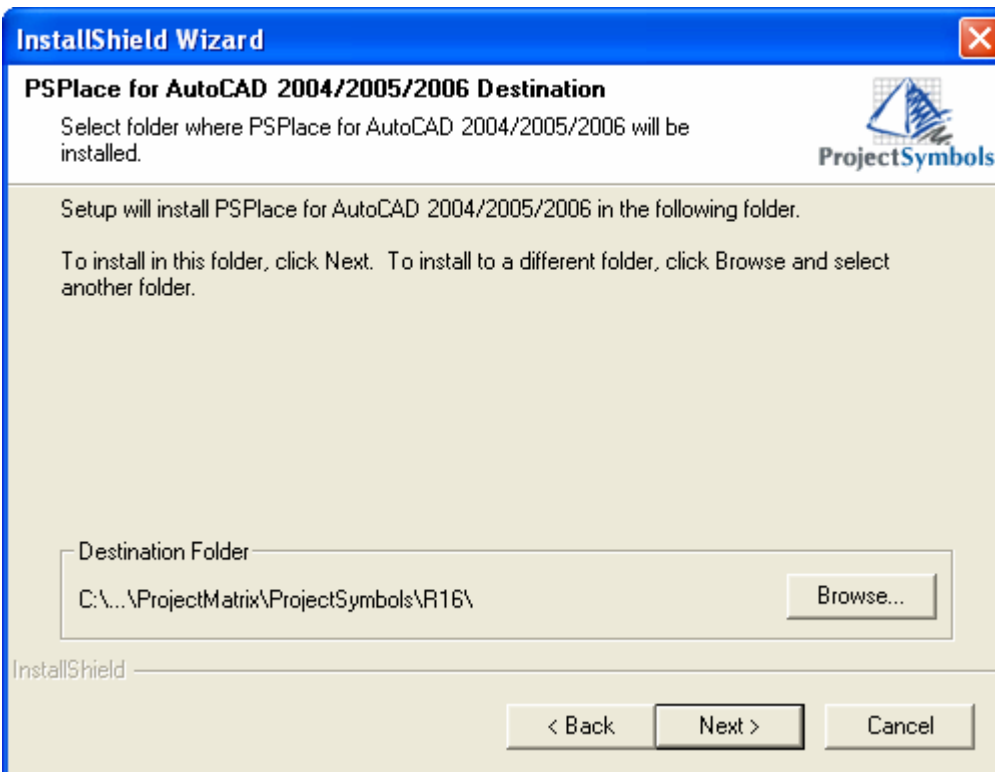
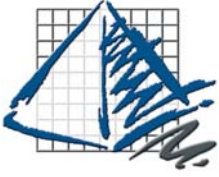


Figure 6-A

Figure 4-A



# PSPlace (v4) Installation

7. Verify that the installation paths are correct and click **Next**.

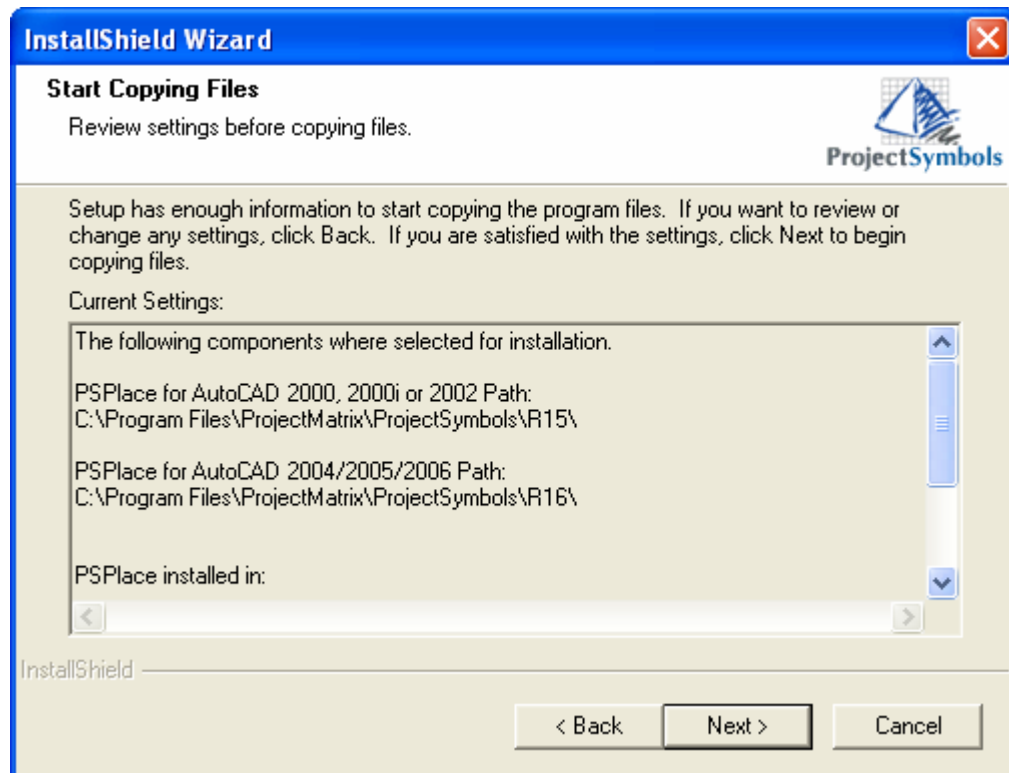
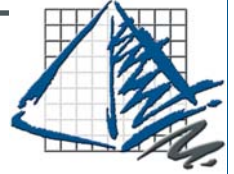


Figure 7-A

# PSPlace (v4) Installation



8. Choose the version(s) of AutoCAD you wish to use the software with.

If your symbols are located on a network drive please see **Appendix A** for network installation instructions.

Click **Next** to continue.

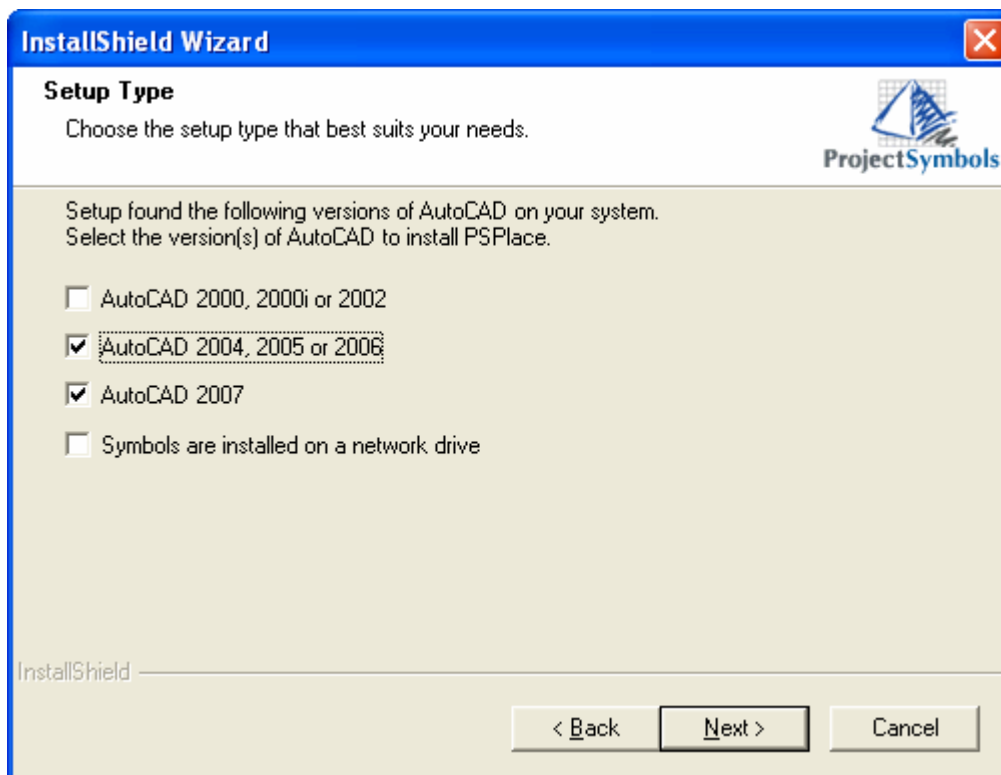
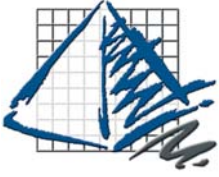


Figure 8-A

Figure 4-A



# PSPlace (v4) Installation

9. Click Finish to complete the installation.

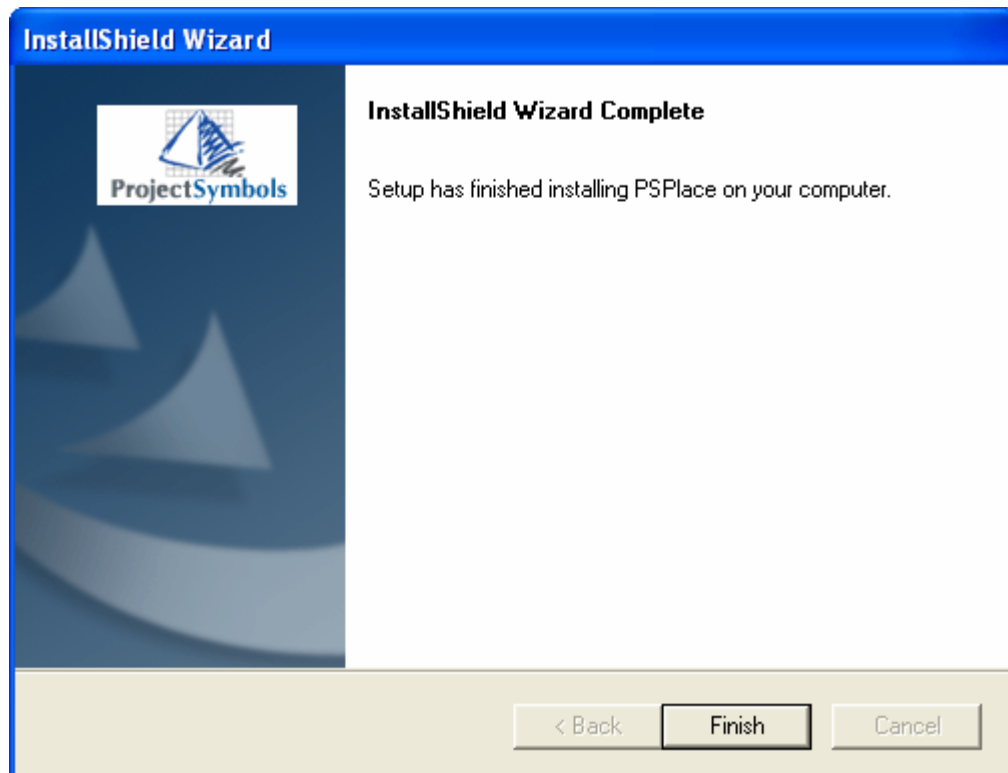
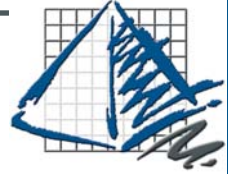


Figure 9-A

# ProjectSymbols Installation

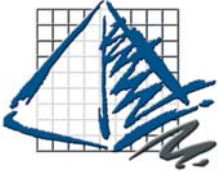


## ProjectSymbols Installation

### Introduction:

The installation processes for ProjectSymbols and PSPlace (v4) have changed. Please read this guide carefully when upgrading to the new versions of the software. The changes allow for easier symbols updates and complete network integration.

Enhancements have been made to all of the symbols libraries. These enhancements require some additional configuration files. ***You will need to update all of your symbols libraries for these changes to take effect. Failure to do so will cause the symbols to not work properly.***



# ProjectSymbols Installation

## Symbols Installation Instructions

1. **Make sure that AutoCAD and all ProjectMatrix software is shut-down.** Insert your ProjectMatrix DVD and choose the **ProjectSymbols** button on the Main Setup Window.

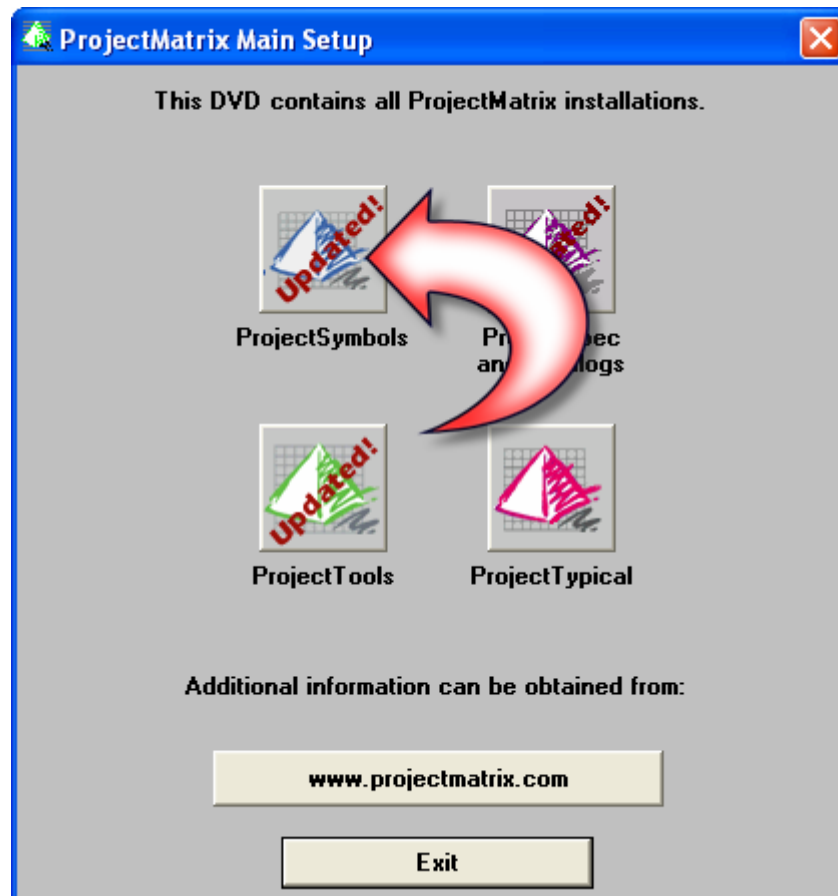
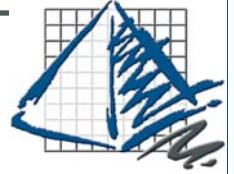


Figure 1-B

# ProjectSymbols Installation



2. Click the **ProjectSymbols (Symbols4)** button in the ProjectSymbols Installation Window.

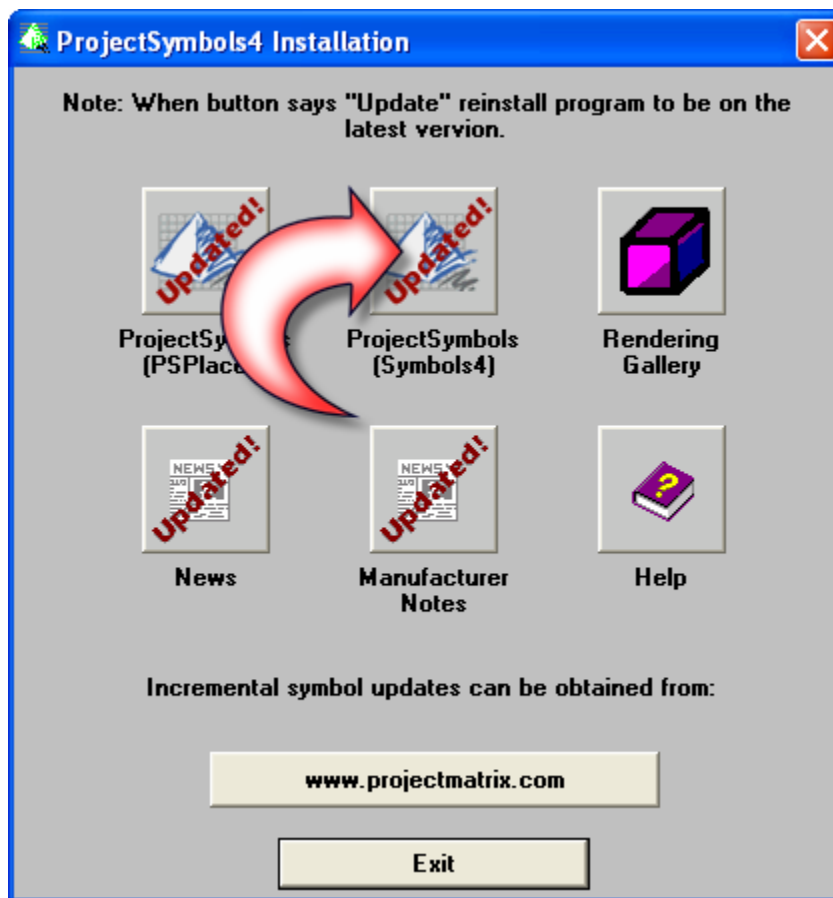
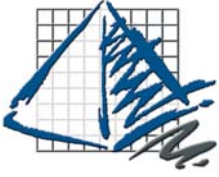


Figure 2-B



# ProjectSymbols Installation

3. The welcome screen will appear. Click **Next** to continue.

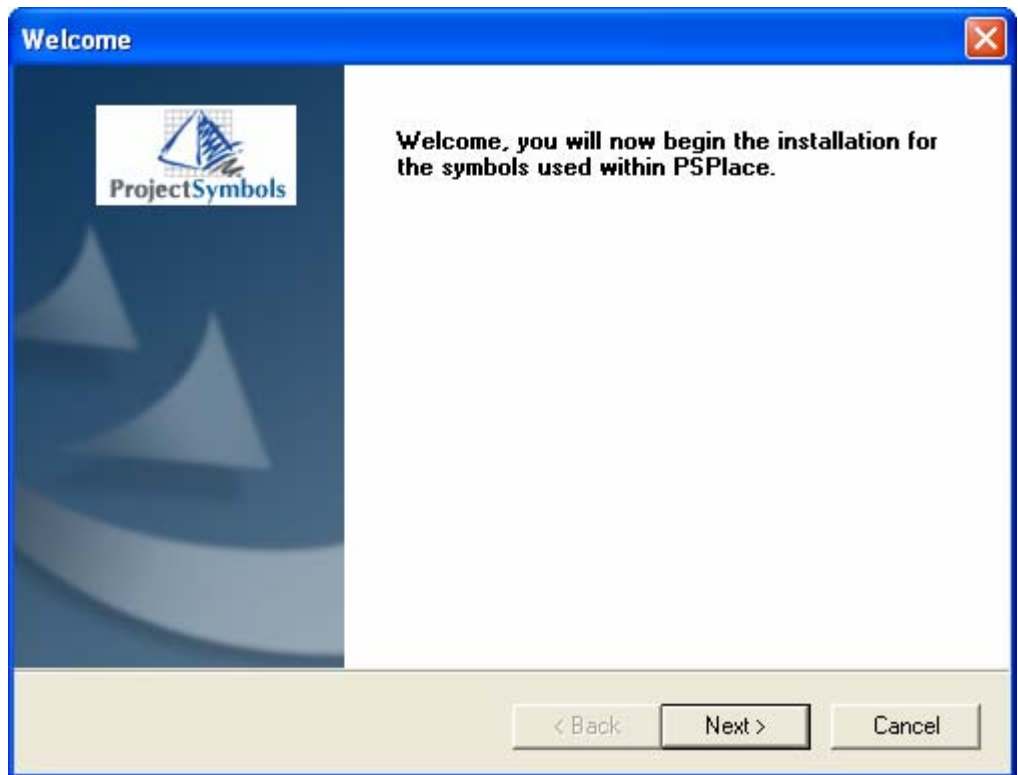
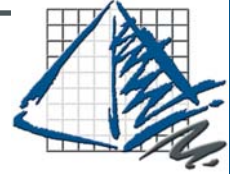


Figure 3-B



# ProjectSymbols Installation



4. Read the license agreement carefully and click **Yes** to accept it.

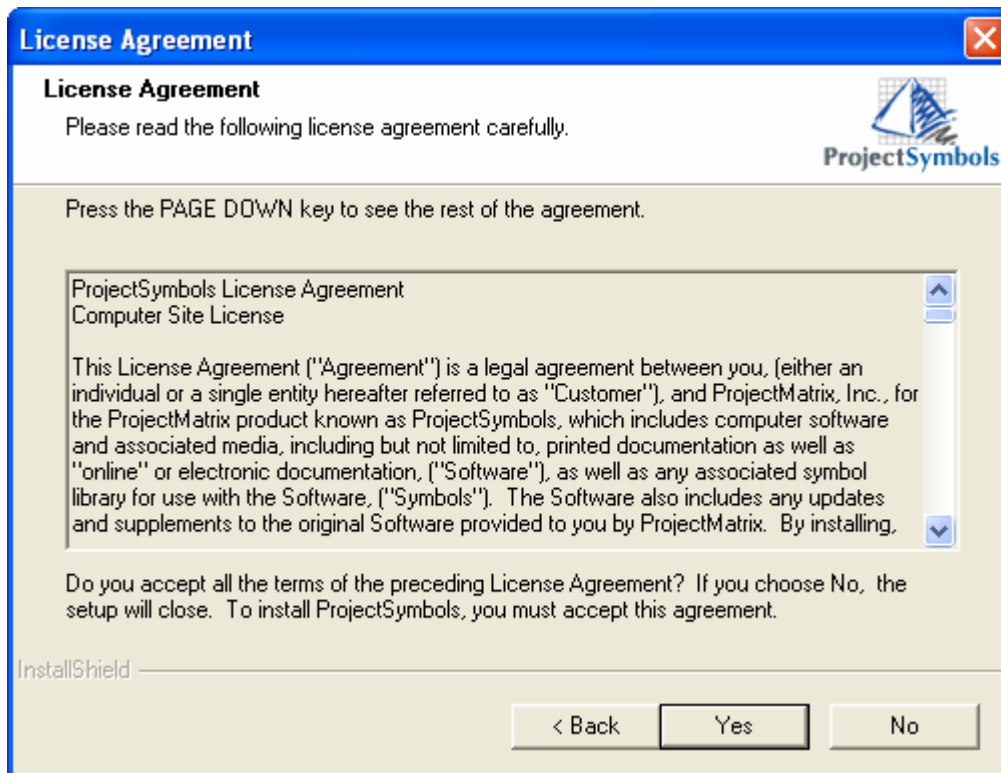
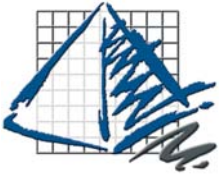


Figure 4-B



# ProjectSymbols Installation

5. The What's New? window will have information on what has been updated or changed since the last distribution. Please read about the changes and click **Next** to continue.

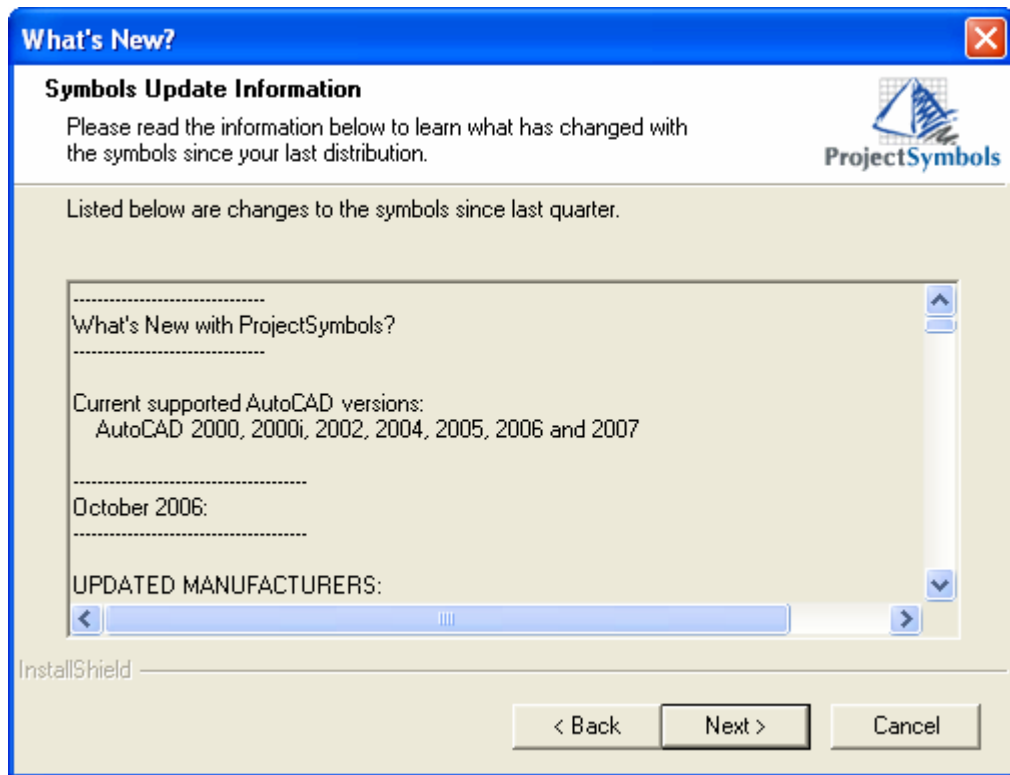
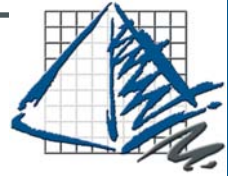


Figure 5-B

# ProjectSymbols Installation



6. The setup status bar will appear. Please wait until setup has completed all the requested operations.

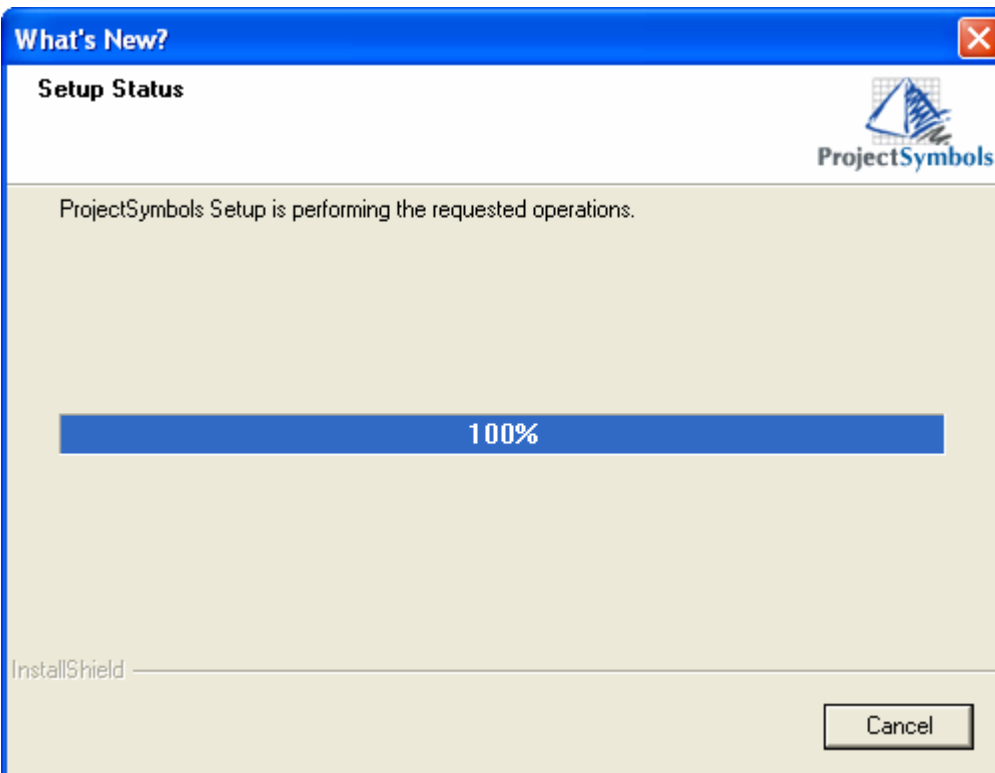
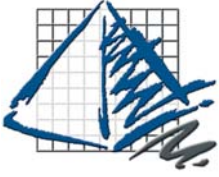


Figure 6-B



# ProjectSymbols Installation

## ProjectSymbols

- The ProjectSymbols Setup window will appear. On the left hand side of the screen choose which manufacturer symbols you want to install. To do so simply click the icon beside the manufacturer name, the **red X** indicates that the symbol library will not be installed and the **gray hard drive icon** indicates that the symbol library will be installed or updated. You can also choose the “Install All” or “Remove All” button located at the bottom of the window.

Next verify that the installation paths are correct. If you are installing the symbols to a network drive, click the browse button beside each of the corresponding paths and choose the location on the network where you want to install the files.

\*\*Note if you are installing the symbols to a network drive please see the Troubleshooting section located at the end of this document for more information about sharing the symbols across a network.

Click **Next** to continue.

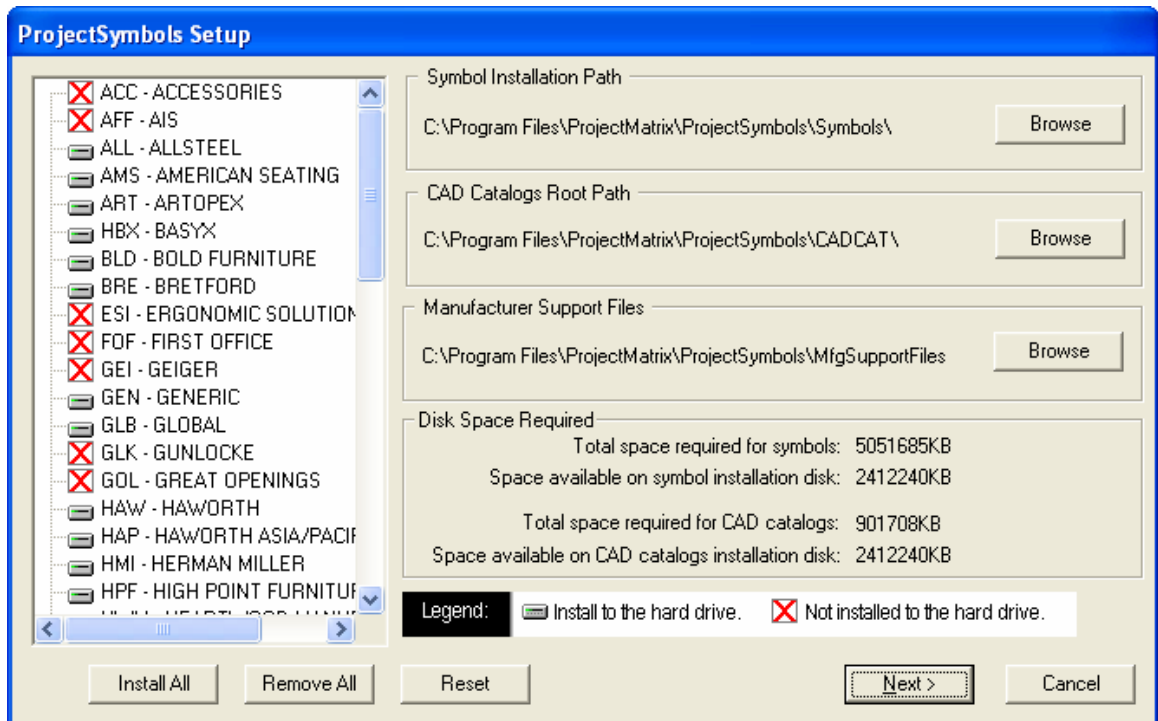
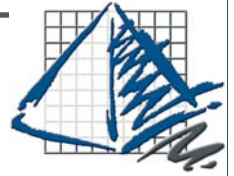


Figure 7-B

# ProjectSymbols Installation



8. Verify that the paths are correct and click **Finish**.

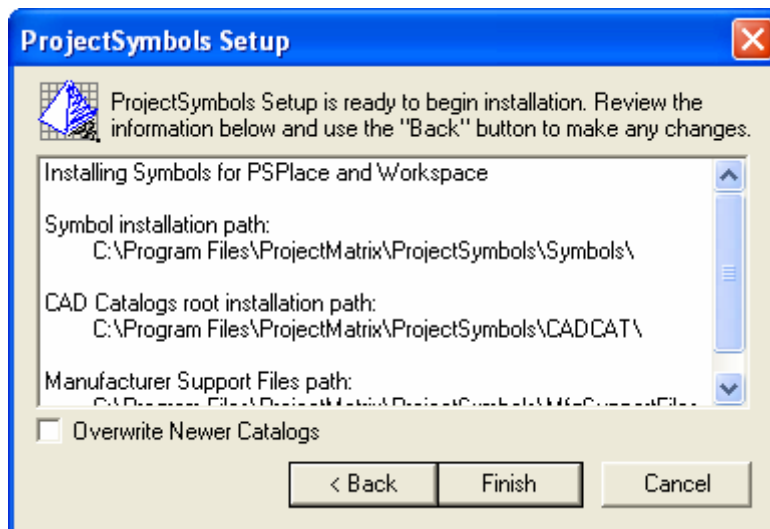
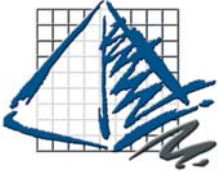


Figure 8-B



# ProjectSymbols Installation

9. The ProjectSymbols Setup window will appear. Please wait for all of the files to install.

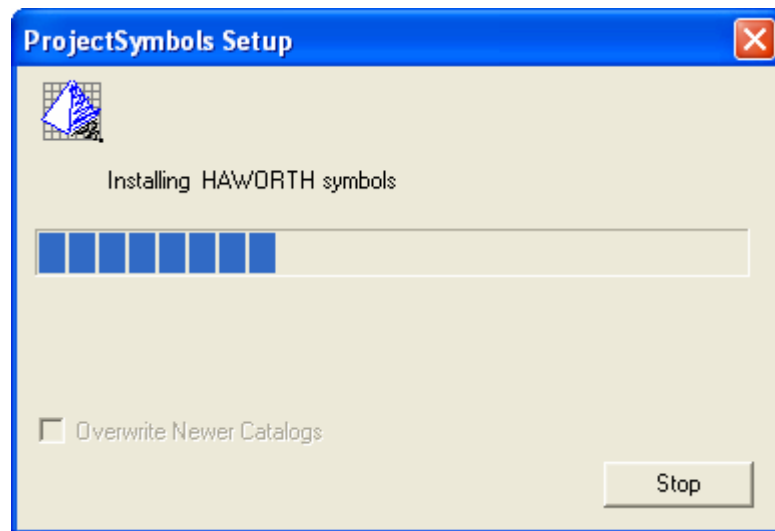


Figure 9-B

10. After all of the manufacturers symbols that you selected have finished installing the ProjectSymbols Setup complete confirmation will appear. Click **OK**. Your symbols are now installed and ready to use.

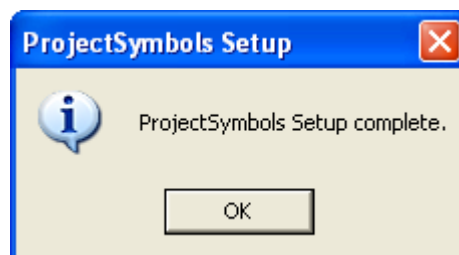
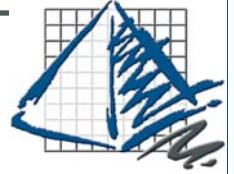


Figure 10-B

# Appendix A



## Appendix A

### Network installation options for PSPlace (v4)

If installing symbols to a network it is recommend that you create the network folders to house the symbol and configuration files. Example listed below:

*Network drive:* \ProjectSymbols\Symbols

*Network drive:* \ProjectSymbols\MFGSupportFiles

*Network drive:* \ProjectSymbols\CADCAT

If your symbols are already located on a network drive, select the correct path for each of the three directories.

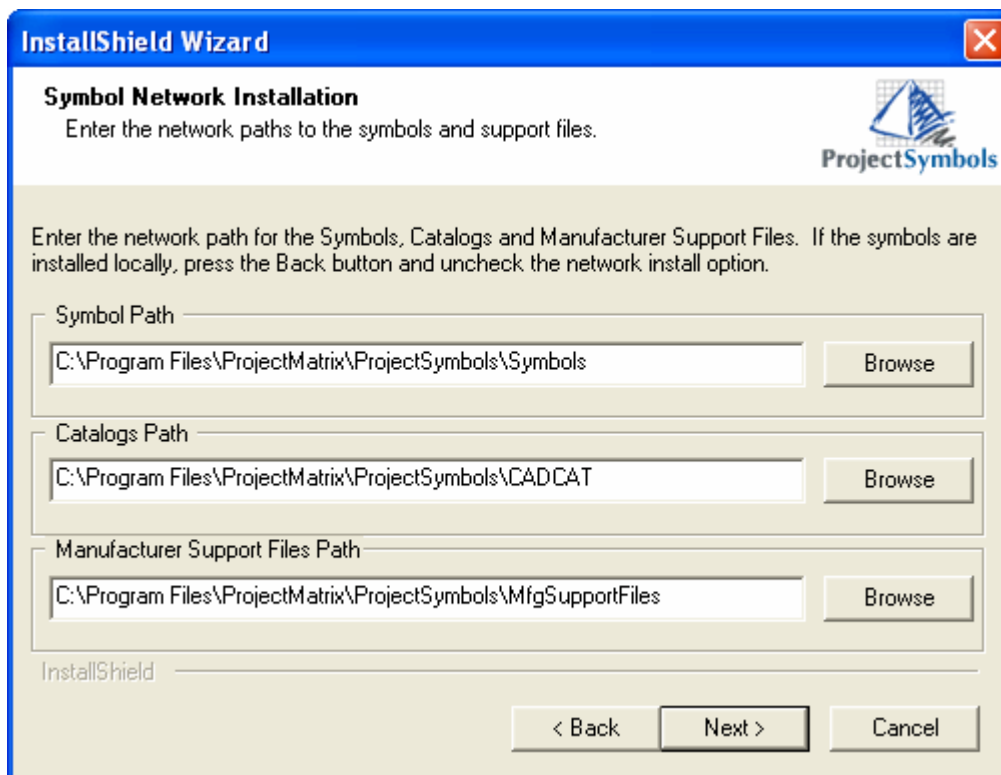
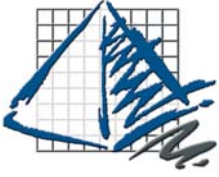


Figure A-A



# Troubleshooting

## Troubleshooting

### 1. User Rights

When installing PSPlace (v4) the user must have Administrator or Power User rights. If this is not possible, some directories must be manually set to allow read/write access.

Users must have read/write access to the following directories...

C:\Program Files\ProjectMatrix  
C:\Program Files\Common Files\ProjectMatrix  
C:\Windows

### 2. Network Problems

If you are experiencing any problems using the symbols over the network please check the following...

If your symbols are running slowly it may be due to your antivirus software. Some antivirus software actively scans every file being brought across the network and slows down performance. It is a good idea to setup rules in your antivirus software to not actively scan the symbols directories on your network. This can speed up the performance when placing symbols.



