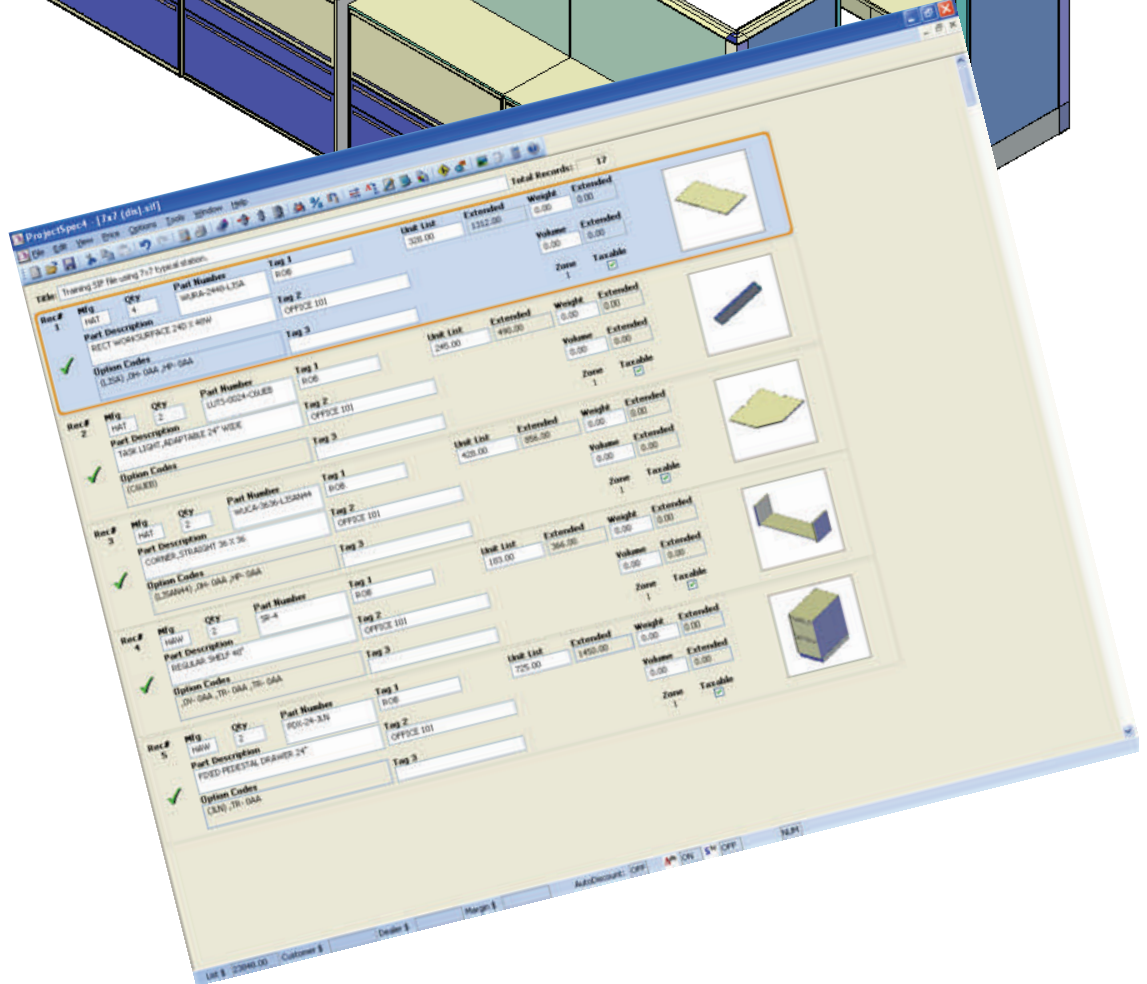
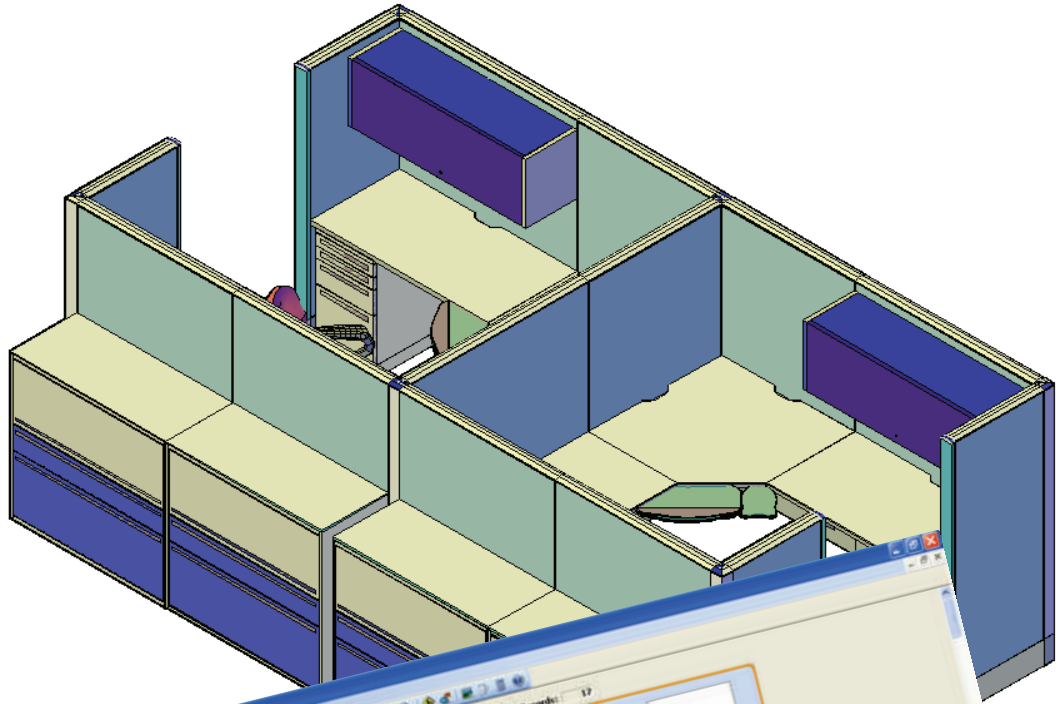
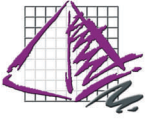


ProjectSpec for Teknion





F1 = Help Guide

F2 = Catalog Viewer

F3 = Field Repeat

F4 = Option Clipboard

Shift + F4 = Smart Copy

F5 = Edit Options

F6 = Join

F7 = Price Line

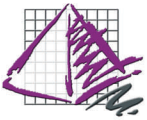
F8 = Expand Merge

F9 = Merge

F10 = Option All

F11 = Discount

F12 = Toggle Classic/Spreadsheet View

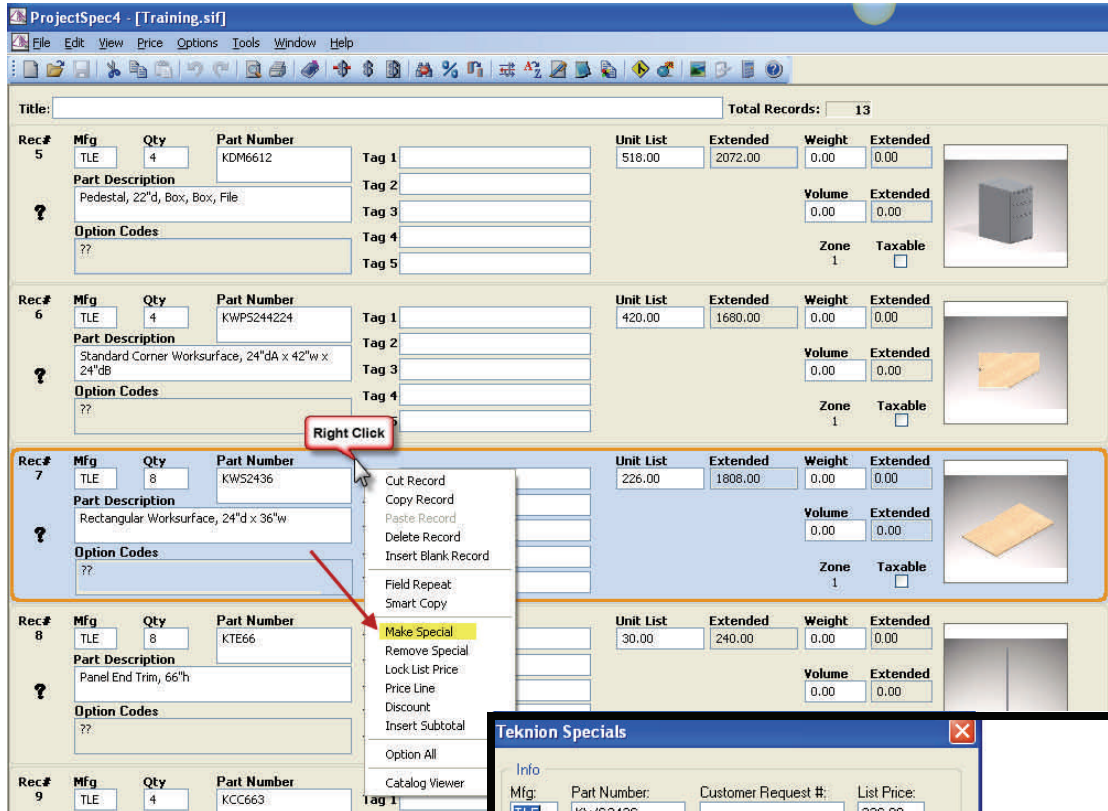


ProjectSpec Help Teknion Specials

Teknion

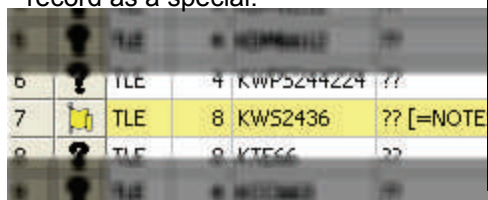
ProjectSpec for Teknion

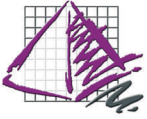
When making a special part for Teknion, the user needs to Right Click on a record. This works in any view of ProjectSpec whether it be Classic View or Spreadsheet View. If the 3 letter catalog code is associated to a Teknion product line, then it will open a Teknion specific Specials dialog. Otherwise it will open a generic specials dialog box.



Once the Specials dialog box is opened, the user can fill out or change any field necessary. They will find fields for CR #, Sif Note and Report Notes.

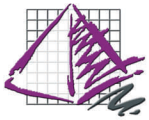
Once the information has been entered and the user selects the OK button, the record line will display a yellow flag and the line will be highlighted in yellow to designate that record as a special.



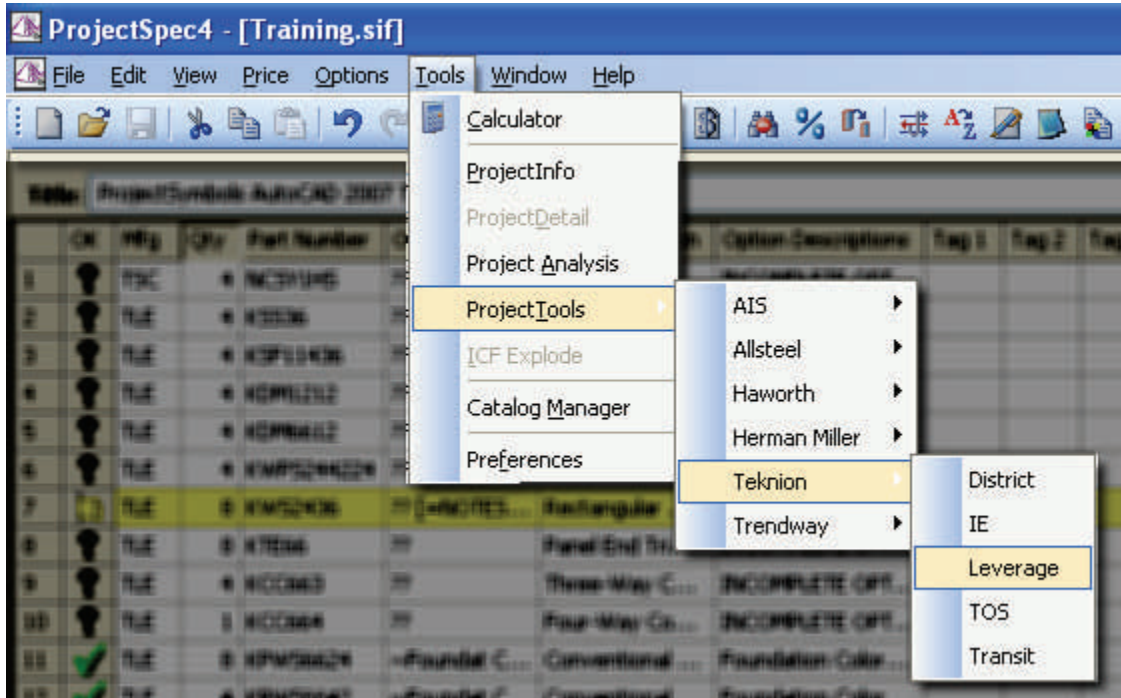


Guidelines for specifying a SPECIAL in Teknion:

- Always provide the CR #
 - ◆ The CR# will override any data typed in manually when placed through TOPS (Teknion Order Processing System)
 - ◆ You may type in Part Description, List Price and other items for printing quotes for customers, but again, CR will take precedence over any other fields.
- The only time a SIF Note or Report Note field is required is when...
 - ◆ A TJ# for a special paint for Teknion or Expansion (no CR's for paint)
 - ◆ A Serial # for the approved COM
 - ◆ Drawer Position for Ledger Build UP configuration
 - ◆ Critical Height or Width for Blvd

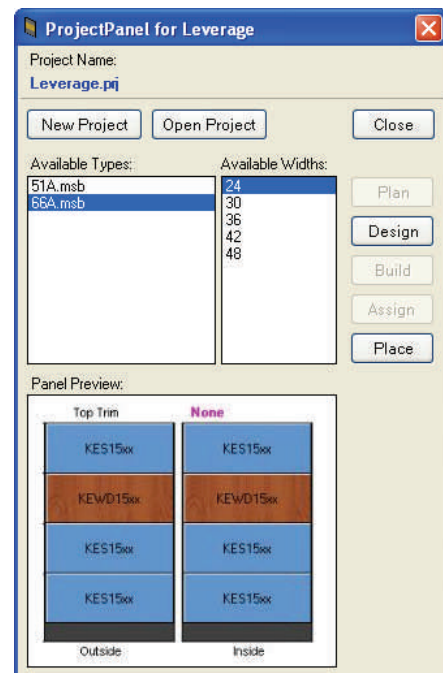


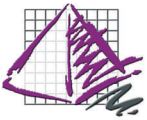
The Teknion Panel Builders



The panel builders can be launched from both AutoCAD and ProjectSpec. The panel builder launched from within ProjectSpec will allow a user to create new projects and open existing projects. The user can also access the design window to modify or create new panel types. Once panel types have been created, the user can pick the type and size and insert it directly into ProjectSpec without going through the placement in AutoCAD.

NOTE:
Teknion (TOPS) can only handle panel names less than 10 characters.

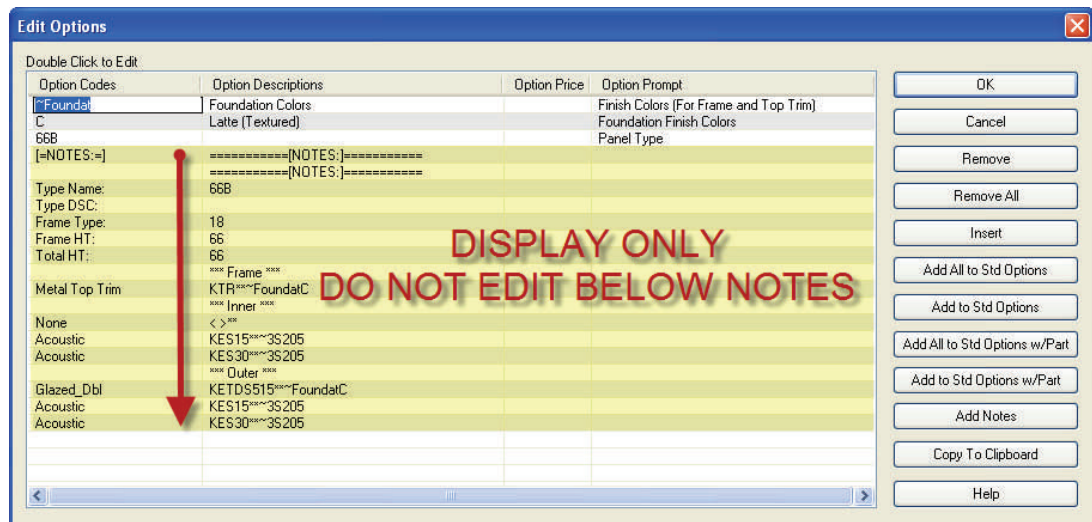


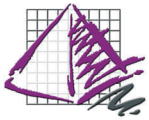


Teknion Panel Builders

Important Things to Know About Working with Panel Builders

1. **What is a Panel Project?**- When you start a Panel Builder like Leverage or T|O|S, you are asked to save the location. This creates a folder with a .prj extension. (ie. C:\MyDocuments\Projects\MyPanels.prj) That .prj folder contains all of the panel type information. (DO NOT EDIT ANY INFORMATION INSIDE OF THIS FOLDER!) You will need to keep track of where that folder is located.
2. **Location! Location! Location!**- When a panel type is created it stores the project path along with the type. If this path is changed by moving the folder or sending the project to someone else this must be addressed to correctly price the panel types. This also can be a problem if the project folder has been renamed. (See Step 4 for resolving path issues.)
3. **Options & Finishes**- When using a panel builder with Teknion product, all specifications, options, and finishes must be applied in the project through the Panel Builder. This can be done at any point, but all finishes must be changed in the Panel Builder or "Panel Matrix" and not through manually editing the finish codes in ProjectSpec.



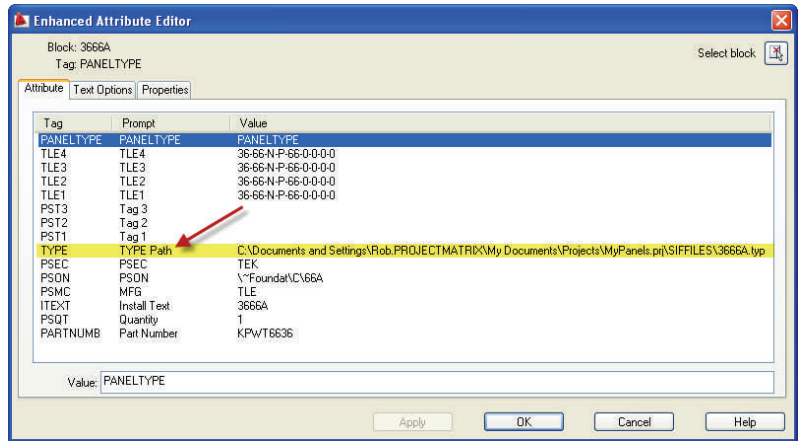


Teknion Panel Builders

Important Things to Know About Working with Panel Builders

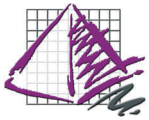
4. **What is a Panel Project?**- When you start a Panel Builder like Leverage or T|O|S, you are asked to save the location. This creates a folder with a .prj extension. (ie. C:\MyDocuments\Projects\MyPanels.prj) That .prj folder contains all of the panel type information. You will need to keep track of where that folder is located.

In AutoCAD, you can see the path in the attribute editor.



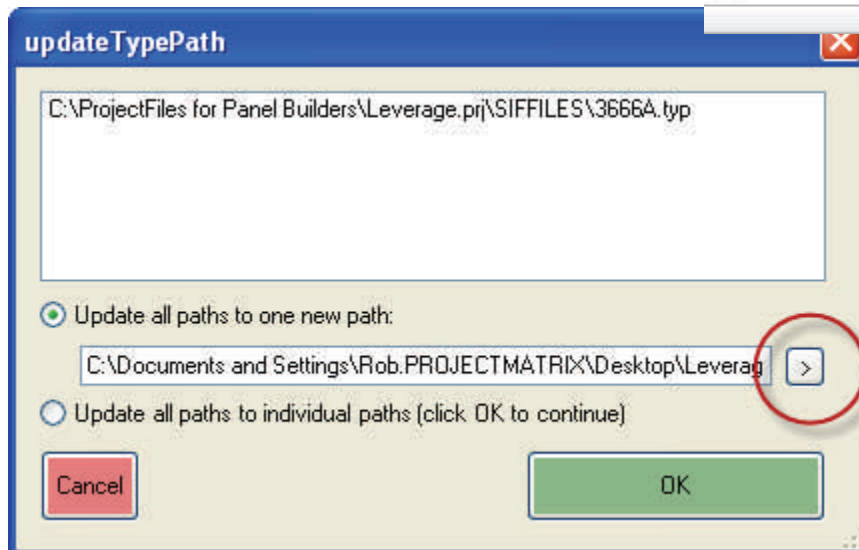
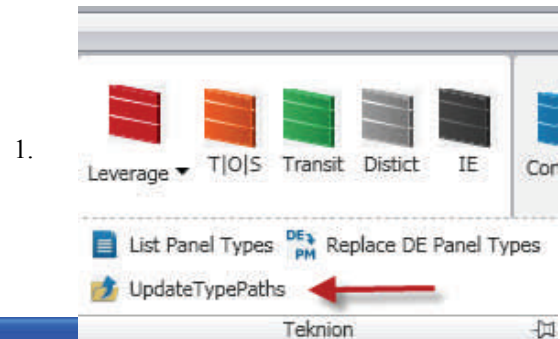
In ProjectSpec there is a column in the spreadsheet view to show the path.

Mfg	Qty	Part Number	Part Description	Option Codes	Option Descriptions	Type Path
TLE	1	KPWT6636	Conventional Panel - Standard, 66"h x 36"w	~Foundat C 66A [=NOTES:=] *** Panel Type *** 66A Type Name: Type DSC: Frame Type: Frame HT: Total HT: *** Frame *** KTR***~FoundatC *** Inner *** Metal Top Trim Acoustic Acoustic Acoustic Acoustic	Foundation Colors Latte (Textured) 66A [=NOTES:=] *** Panel Type *** 66A Type Name: Type DSC: Frame Type: Frame HT: Total HT: *** Frame *** KTR***~FoundatC *** Inner *** Metal Top Trim Acoustic Acoustic Acoustic Acoustic	C:\Documents and Settings\Rob.PROJECTMATRIX\My Documents\Projects\MyPanels.prj\SIFFILES\3666A.typ



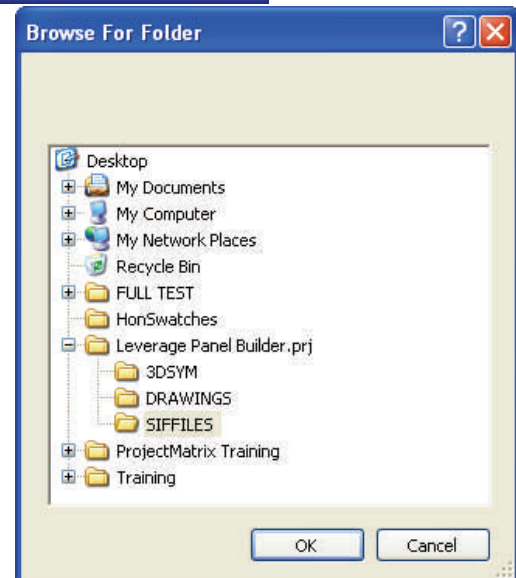
Teknion Panel Builders

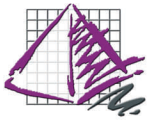
Re-setting Panel Builder Type Paths in AutoCAD



If the project does get moved or renamed, follow these steps in the AutoCAD drawing to remap the path.

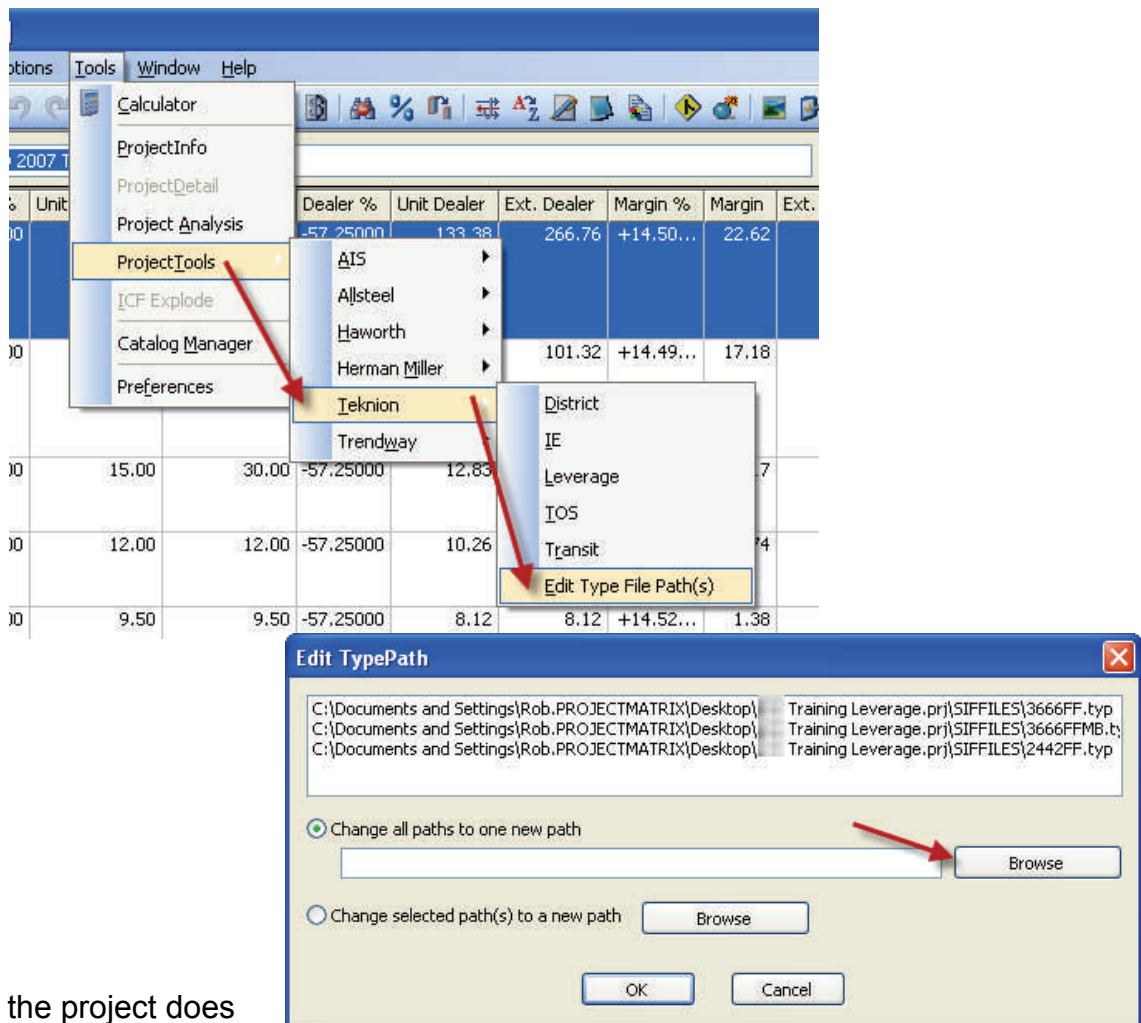
1. Type "updatetypepaths" in the command line, or go to the Teknion Utilities menu in the toolpak pulldown.
2. Click the browse button on the toolbar





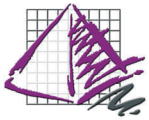
Teknion Panel Builders

Re-setting Panel Builder Type Paths in ProjectSpec



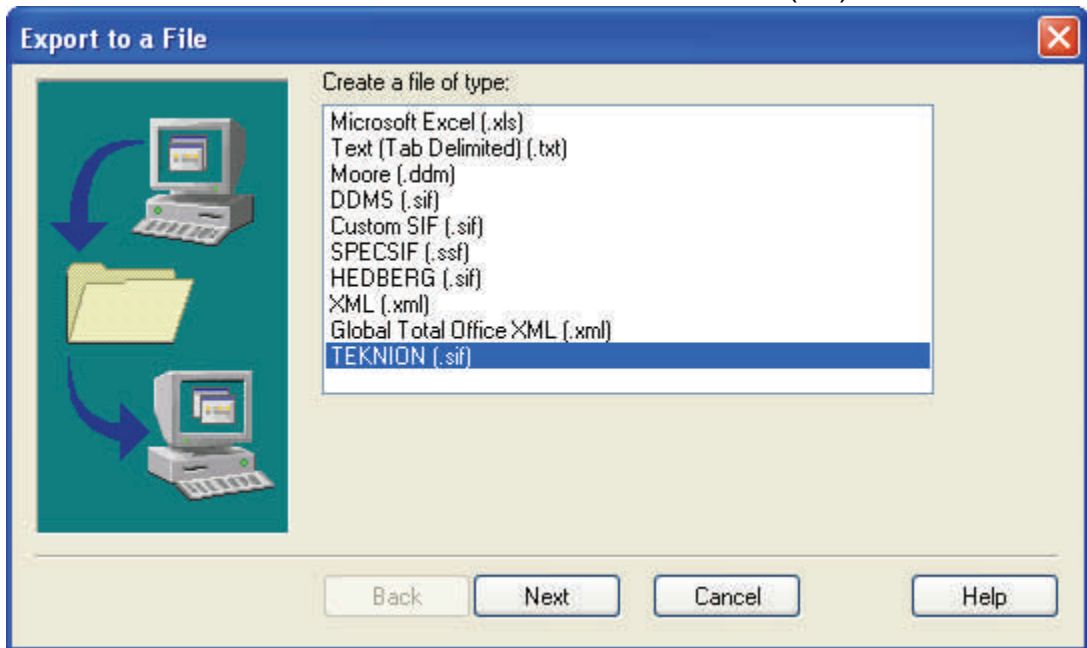
If the project does get moved or re-named, follow these steps in ProjectSpec to remap the path.

1. Go to the Tools pull-down menu and select ProjectTools->Teknion->Edit TypeFile Path(s).
2. Click the Browse box.
3. Search for the .prj folder and link to the SIFFILES folder.
4. Press "OK"
5. Re-Price the SIF file and check for any errors.

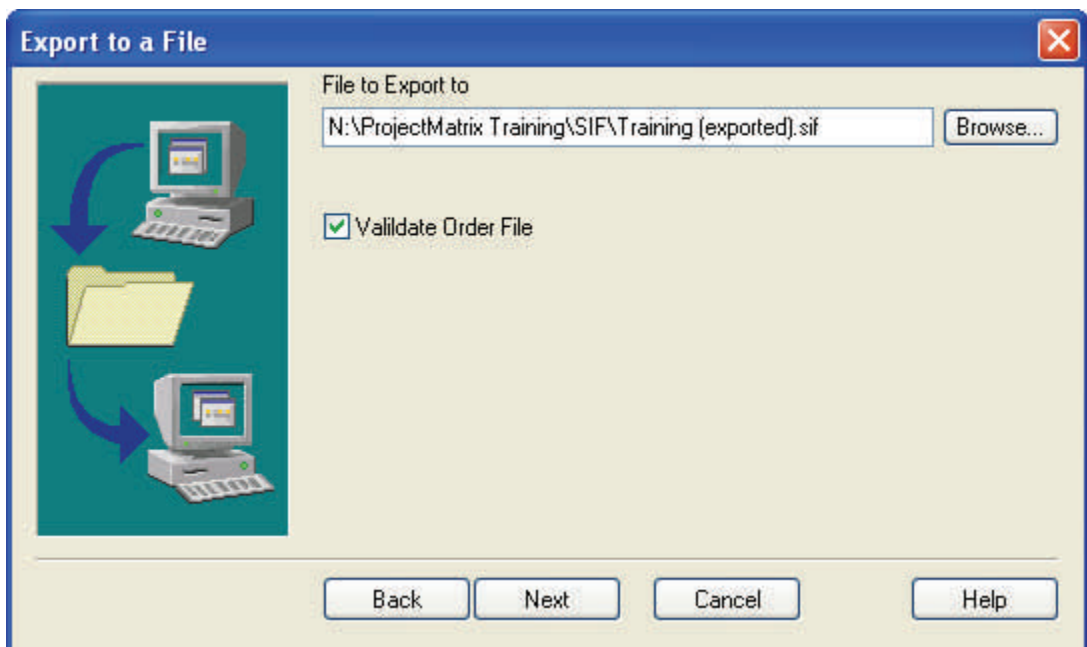


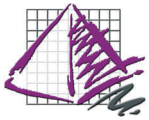
Teknion Export for Order Entry.

1. Go to FILE->EXPORT and then choose Teknion (.sif)




2. Select your file name and output path. If you choose not to change this information, the location will be the same as your SIF you are working on and ProjectSpec will add an "(exported)" to the file name to keep track of which is the completed Teknion Order Entry file.





Teknion Export for Order Entry.

3. The "Validate" command will check the SIF to make sure that there are no  un-optional records. If it does return some errors, then ProjectSpec will display a message box with the lines that are missing.



4. Once the record has been Validated and continues with the Export, you will receive the Teknion Order Entry box. The user can fill in the appropriate fields before finishing the Export.