

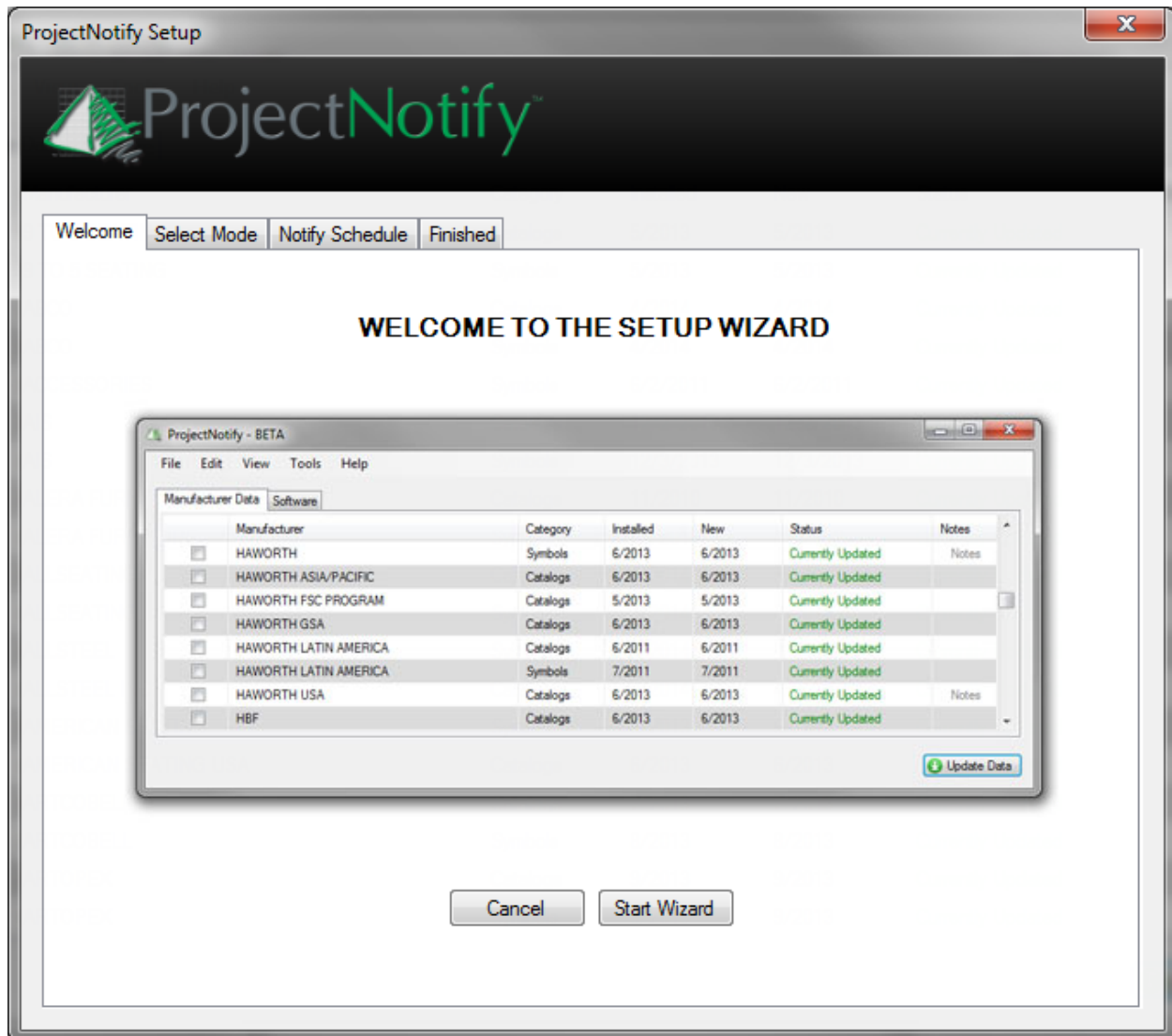


User Guide

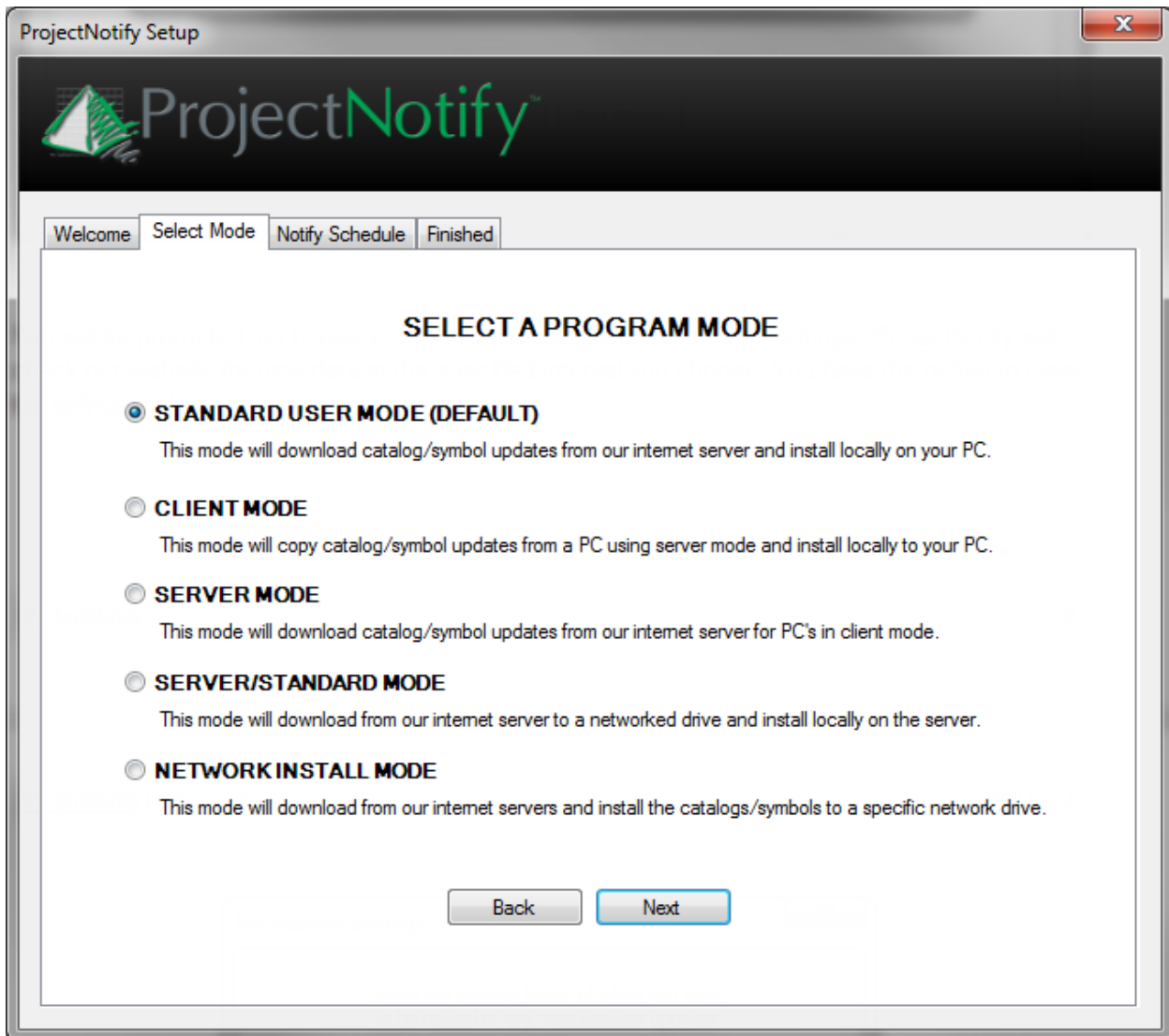
-2. Standard Installation
-8. Example Installation Scenarios
-9. Network Installation
-12. Data Tools
-13. Advanced Settings
-15. Product Requirements

Standard Installation

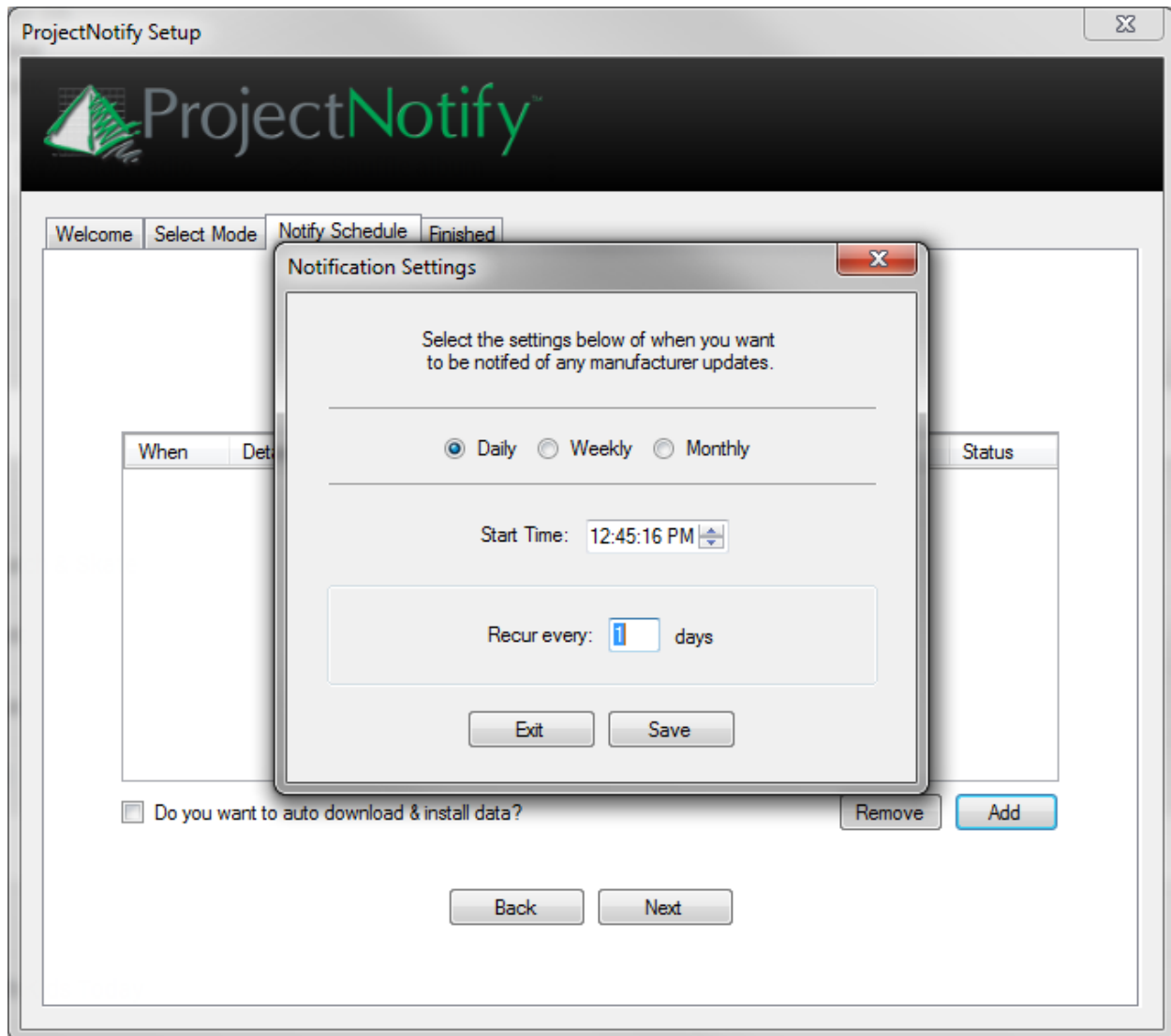
Install ProjectNotify from www.projectmatrix.com. After the installation process has completed you will be guided through the ProjectNotify setup wizard.



Select a program mode for ProjectNotify.

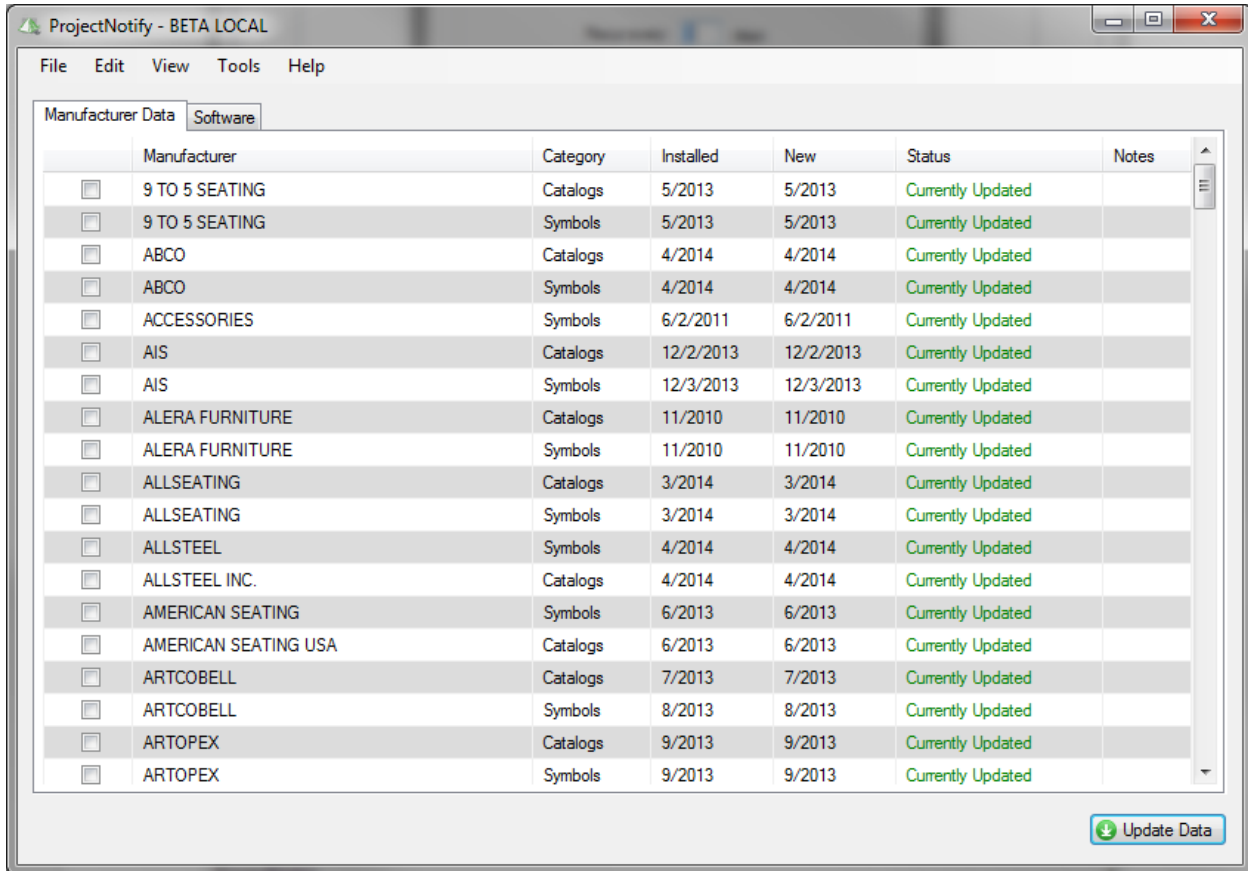


You will be prompted to choose your notification schedule and other settings. ProjectNotify will check our website for new data at the specified interval you choose. You have the option to have the software check daily, weekly, or monthly.

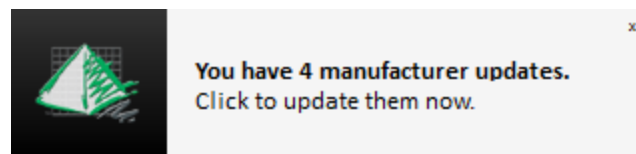


* Important Reminder: ProjectNotify will **NOT** function if the user that it is set up for, is not currently logged in and the computer is not on. ProjectNotify uses the Windows Task Scheduler to automate the download and install process and unfortunately this action does not work if the computer is not on and the user is not logged in, so if you have to shut off your machine at the end of the day ProjectNotify will **NOT** continue to function past then.

Once you have completed the setup wizard the main ProjectNotify screen will appear for you to choose which datasets you want it to manage. Simply check the box beside each one that you want to receive and click the “Update” button at the bottom of the screen.

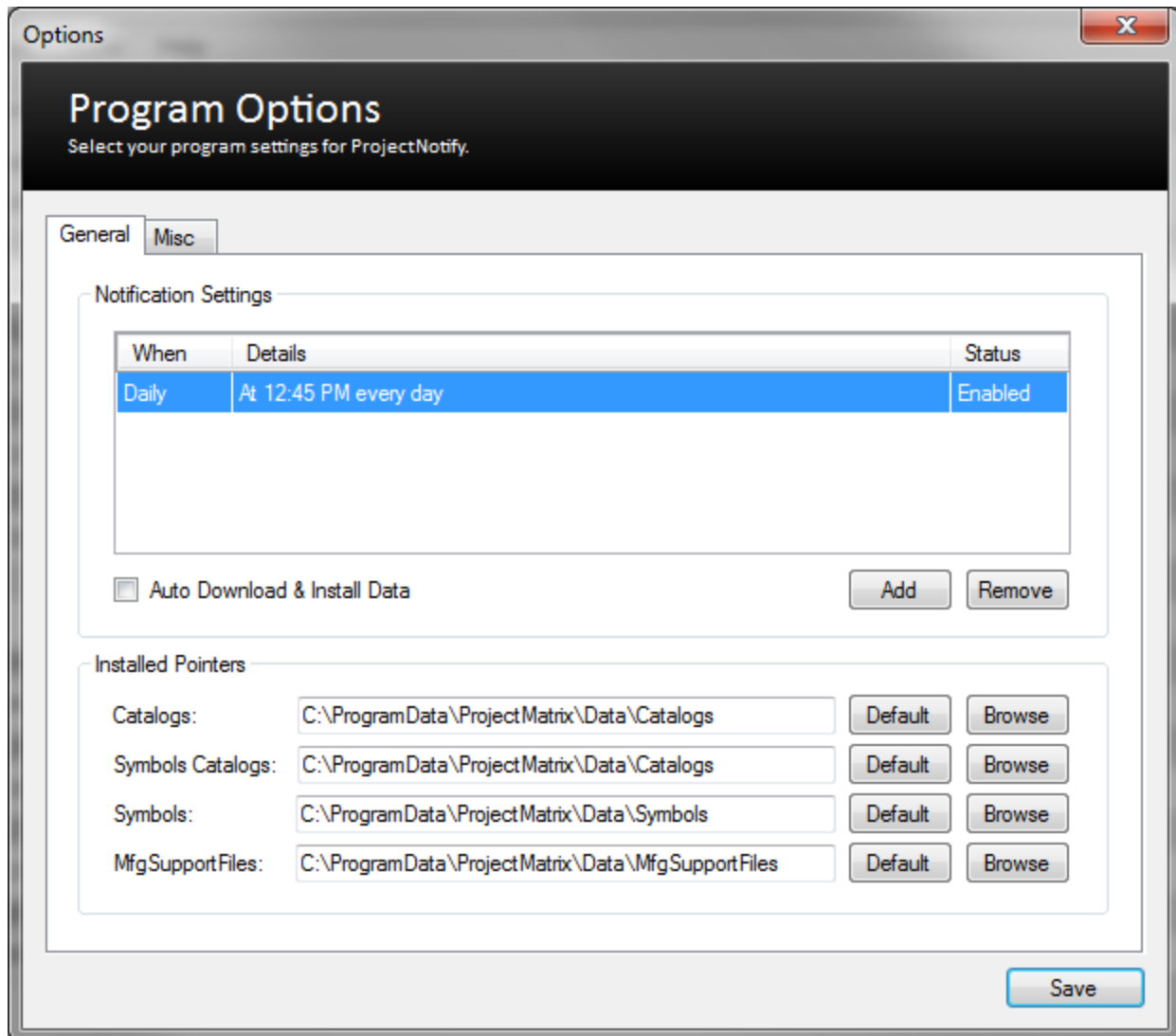


This will update all of the datasets that were chosen and when updates are available message box will pop up in the right hand corner of the screen to notify you of an update.



This completes the standard installation of ProjectNotify. Should you find that the defaults will not work for your configuration you can make changes in the Options dialog of ProjectNotify found under the Tools pull down menu. Here you will find some advanced options and the ability to change the default locations for the data.

Program Options



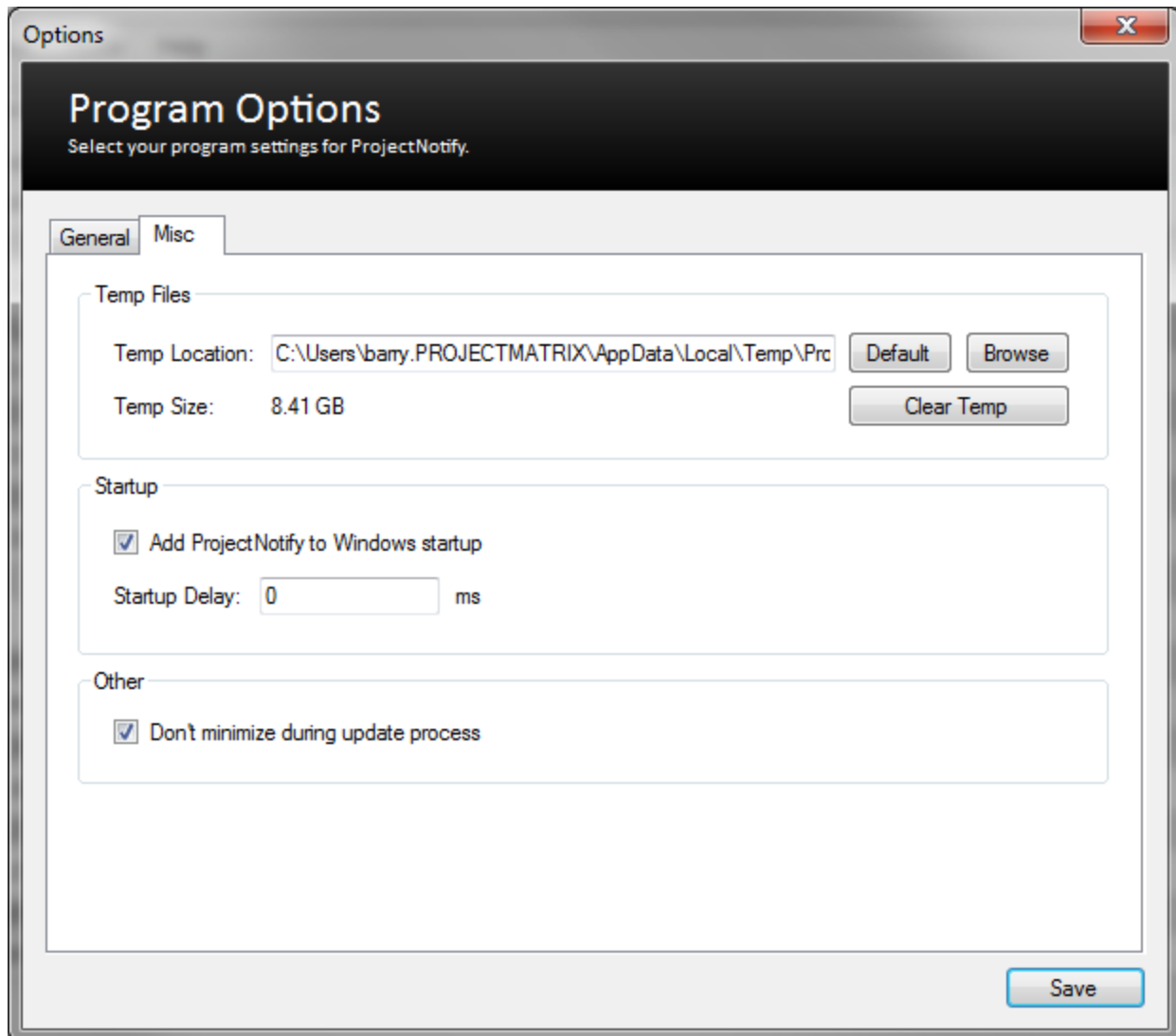
Notification Settings

Here you can add, edit, or remove your notification schedule settings. ProjectNotify will check our website for new data at the specified interval you choose. You have the option to have the software check daily, weekly, or monthly.

Installed Pointers

Here you can specify the location of your installed catalogs and symbols data.

Misc Program Options



Temp Files

This is the location where files are temporarily stored when downloading data or software. The temp files can grow large in size.

Startup

Here you can add ProjectNotify to the Windows startup and also delay the startup in case your network doesn't connect in time.

Other

This setting allows you to keep the ProjectNotify maximized when updating data/software.

Example scenarios.

Most common / Standard solution

Have the software notify you of updates once or twice a week first thing in the morning. ProjectNotify will list the manufacturer data updated and you can browse through the list and decide if you need to have any of the data right away. If it can wait until the end of your work day just start the updates on your way out of the office.

*Note: While downloading and installing updates, ProjectNotify runs in the background and uses minimal computer resources. It throttles down processor, memory, and bandwidth usage when your computer is performing other tasks. Therefore the updates will take a bit longer, but will take up less of your resources, while you are actively using your computer.

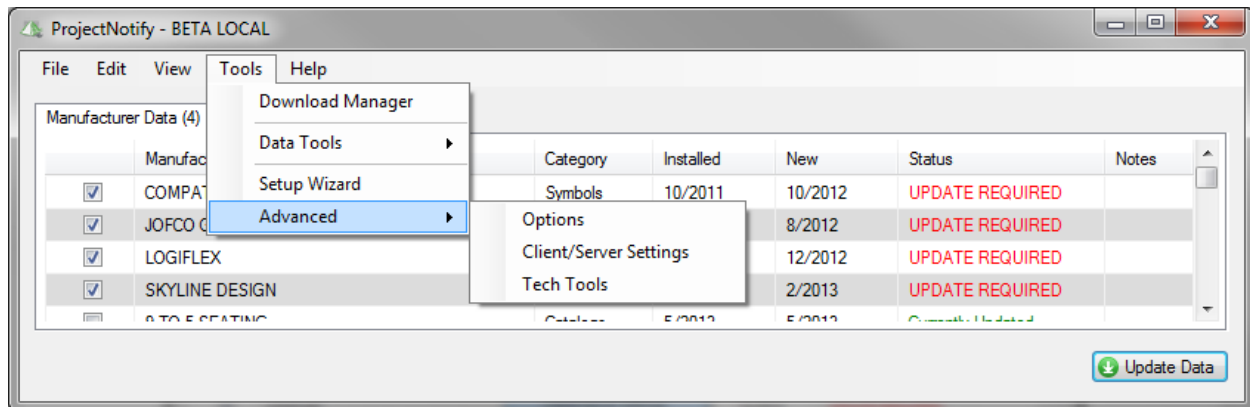
*Important Reminder: ProjectNotify will **NOT** function if the user that it is set up for, is not currently logged in and the computer is not on. ProjectNotify uses the Windows Task Scheduler to automate the download and install process and unfortunately this action does not work if the computer is not on and the user is not logged in, so if you have to shut off your machine at the end of the day ProjectNotify will **NOT** continue to function past then.

Best case / Silent solution

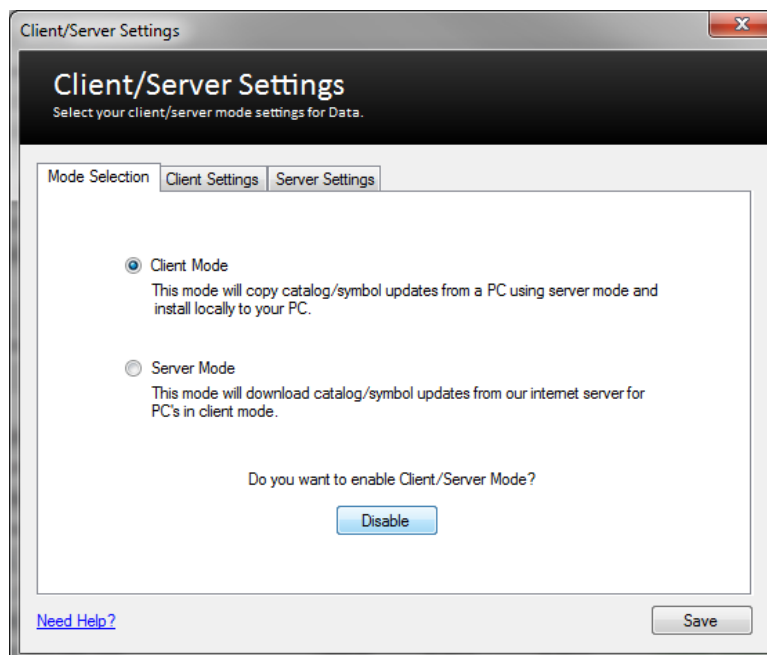
One of the best features of ProjectNotify is that it can do its job and you never have to see it. If your computer stays on all of the time it is best to have ProjectNotify run the updates while you are away. Set your update interval to once a week at a time that you will not be actively using the computer. Then check the “Automatic Download & Install” box in your options dialog menu. ProjectNotify will continue to check for updates on the interval you chose.

ProjectNotify Network Installation

ProjectNotify's Client/Server mode allows you to have one computer (the Server) download and distribute the updates to the rest of the computers (the Client) on the network. This saves bandwidth and time. It also allows the network administrator the ability to moderate what data is available to the users.



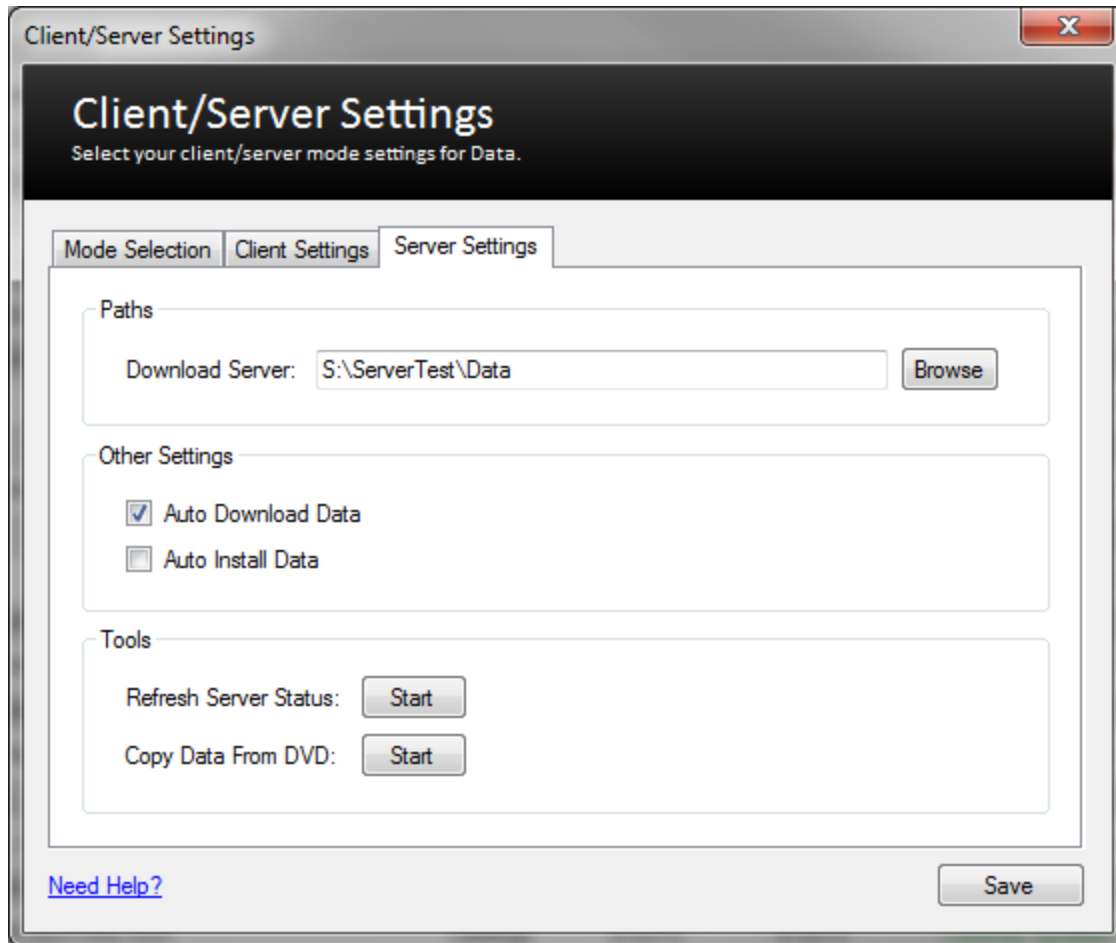
ProjectNotify's client/server settings are built directly into the standard version of the software. To activate them click the tools pulldown menu and choose Client/Server Settings.



To enable client/server mode you will need to select the enable button and then select the mode you will want to use.

Server Mode

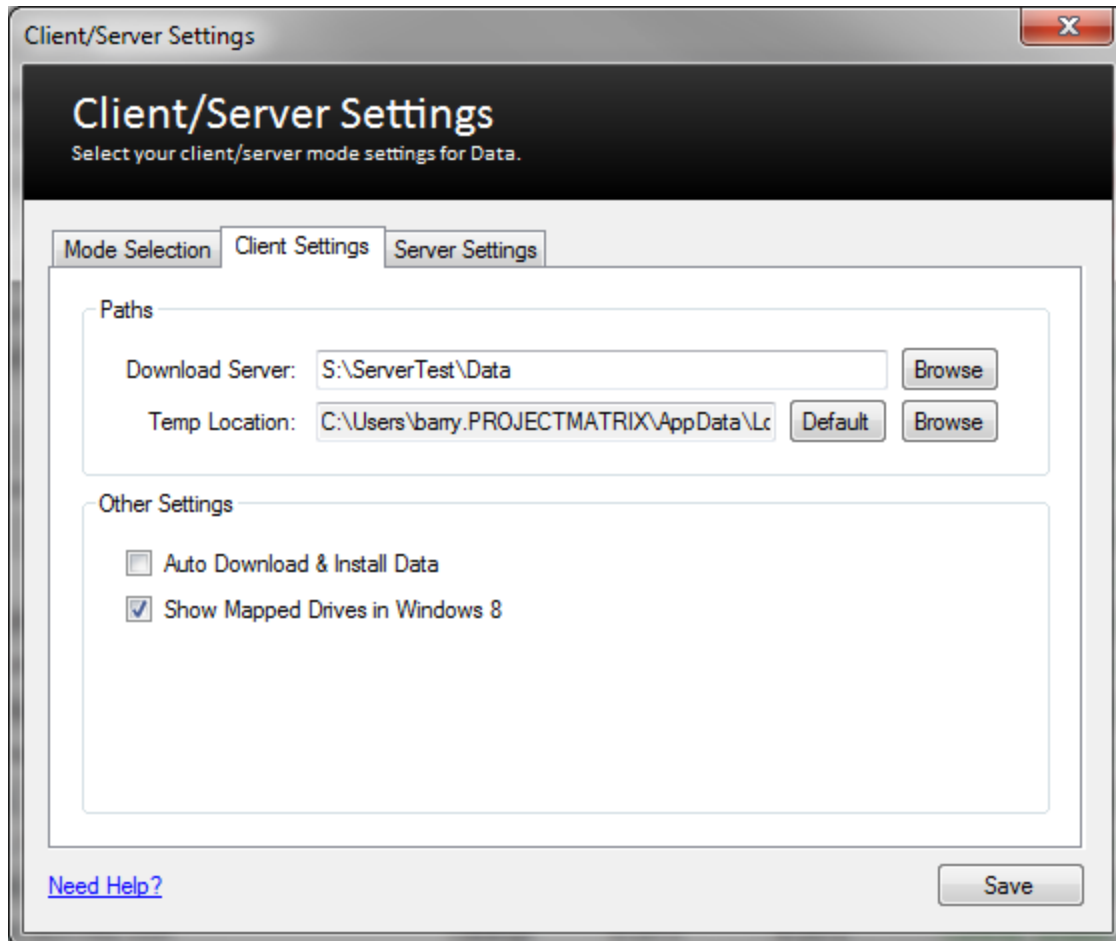
After running the standard installation for ProjectNotify. Open the program and select the Client/Server Settings from the Tools pull-down menu. Choose the radio button located next to server mode to activate the computer as the server.



Set the Download Location to a directory that all of the client computers can access. We have found that using a mapped drive that all of the computers can duplicate works best. Example: (S:\ProjectMatrixData\) Mapping the drives covers nearly all network issues and scenarios we have come across.

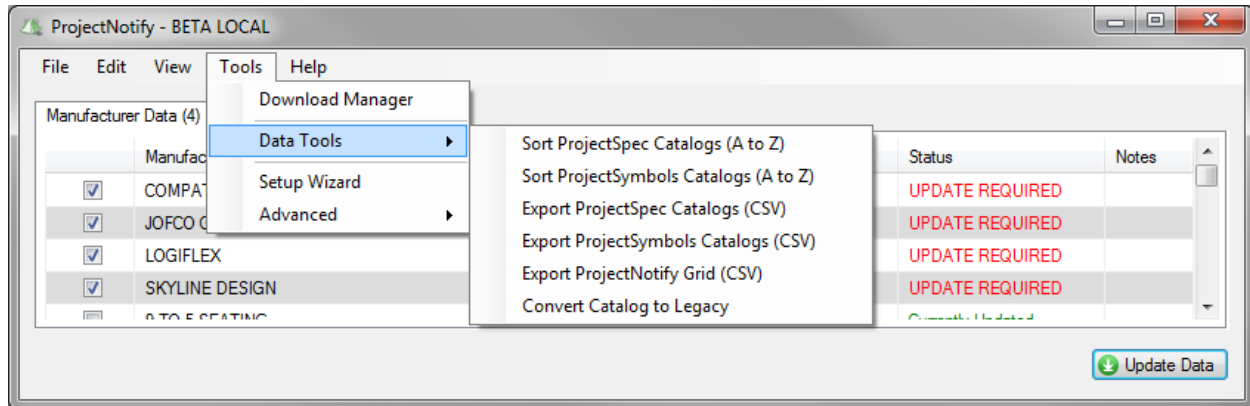
Client Mode

Client mode allows the user to download and install the data from a local computer (Server) without the need to access the internet and use unnecessary bandwidth. To activate Client mode simply select the radio button next to Client mode and set you server path to the location that the server is downloading the data.



In this dialog you can also choose where you want the temporary installation files to be saved. You can also choose the Auto Download & Install checkbox if you wish for the software to automatically update your files when the server is updated without prompting you.

Data Tools



Sort ProjectSpec Catalogs (A to Z)

This tool allows you to reorder the ProjectSpec catalog list in alphabetical order.

Sort ProjectSymbols Catalogs (A to Z)

This tool allows you to reorder the ProjectSymbols catalog list in alphabetical order.

Export ProjectSpec Catalogs (CSV)

This tool allows you to export your ProjectSpec catalog list into a comma separated file.

Export ProjectSymbols Catalogs (CSV)

This tool allows you to export your ProjectSymbols catalog list into a comma separated file.

Export ProjectNotify Grid (CSV)

This tool allows you to export the ProjectNotify data grid into a comma separated file.

Convert Catalog to Legacy

This tool allows you to convert your ProjectSpec catalog into a legacy catalog. This allows you to retain older data without new data overwriting it.

Advanced Settings

Program File Locations:

Program Files:

C:\Program Files (x86)\ProjectMatrix\ProjectNotify

Download Manager List:

C:\Program Files (x86)\ProjectMatrix\ProjectNotify\downloads.xml

Temp Directory for Downloads:

*C:\Users**Username**\AppData\Local\Temp\ProjectMatrix Installs*

Beta Test File (TESTING ONLY):

C:\Program Files (x86)\ProjectMatrix\ProjectNotify\beta.test

C:\Program Files (x86)\ProjectMatrix\ProjectNotify\betalocal.test

Catalog and Symbol Pointer Files:

C:\ProgramData\ProjectMatrix\PSInstalledPointer.ini

C:\ProgramData\ProjectMatrix\PSSymbolsPointer.ini

Firewall Exceptions:

The paths/ports below are required for ProjectNotify to work.

Port: 80

Database Location (PHP): <http://www.projectmatrix.com>

Download Location: <https://s3.amazonaws.com/ProjectMatrix>

Settings File:

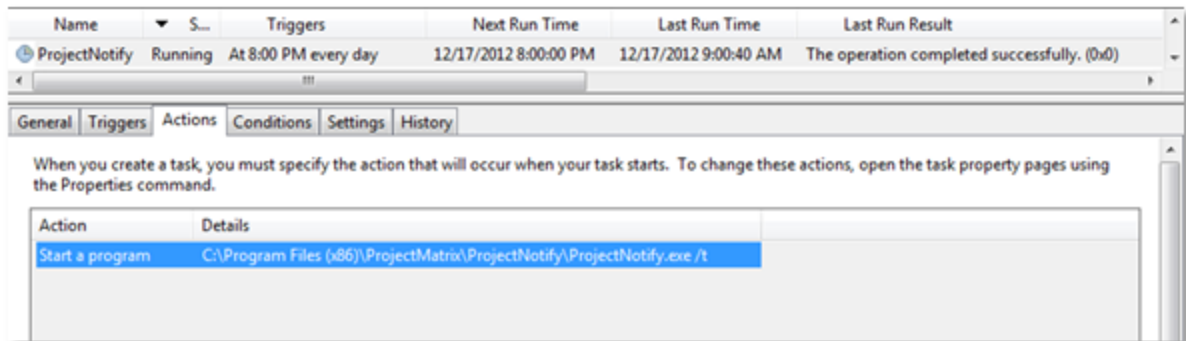
All settings are stored in the path below except for the pointers. A new folder will be created with the version number when upgraded.

*C:\Users**Username**\AppData\Local\ProjectMatrix\ProjectNotify.exe_Url_itaz2oey0evrnr0vk4u2vuonnqkdpcs**Version Number**\user.config*

Task Scheduler:

The popup/auto install for the scheduler is triggered by the task scheduler. This notification will not work if the user is logged off.

1. **Start > Control Panel > Administrative Tools > Task Scheduler**
2. Click on **ProjectNotify** in the list of schedules
3. Click on **Actions tab**
4. The following should be listed under the **Actions tab**



Hardware and Software Requirements

- Windows OS (Windows XP and Above)
- NET 4.0 Framework
- Internet Connection
- Your user account must be a power user or higher.