

Installing

ProjectSymbols

from the ProjectMatrix DVD

Installing Project Symbols from the ProjectMatrix DVD

System Requirements

Operating System: Windows 2000, XP (Home or Pro) or Vista (32-bit version)

Software: AutoCAD 2004 through 2009

(ProjectMatrix's policy is to support the two most recent releases of AutoCAD.)

CPU: Pentium/ 100 MHz

RAM: 64 MB (minimum)

Hard Drive: 50 MB (Free space depending on symbols installed)

Resolution: 800 x 600 / 256 Colors (minimum)

Peripherals: Windows compatible printer or plotter (optional)

Product Sold As: Site License or Seat License (Annual Subscription Fee)

Before you begin...

AutoCAD must be installed and ran at least once prior to installing ProjectSymbols or ProjectSymbols Lite.

What is ProjectSymbols\ProjectSymbols Lite?

ProjectSymbols is a contract furniture 2D and 3D symbol library add-on package for AutoCAD. This gives you the capability to place 2D manufacturer specific symbols in a drawing, creating 3D views and SIF files (bill of material) for all or part of a drawing plus many more features. You can visit our website (www.projectmatrix.com) to see a listing of all the manufacturers that are supported in ProjectSymbols.

ProjectSymbols Lite is a limited feature version of ProjectSymbols. This is a FREE tool offered to A&D firms as well as end users. This is not for dealers. This gives you the capability to place 2D manufacturer specific symbols in a drawing and to create SIF files for all or part of a drawing. Current ProjectMatrix customers and manufacturers may provide this free software and its CAD libraries to their external design firms and customers. Drawings created with ProjectSymbols or ProjectSymbols Lite are 100% compatible with each other.

Understanding Terminology

ProjectSymbols\ProjectSymbols Lite is made up of two parts. You must download and install both parts.

Part 1: Known as *PSPlace*. PSPlace has all the functionality that ProjectSymbols\ProjectSymbols Lite offers. The functions include searching for

parts, placing parts in a drawing and creating SIF files. This is the user interface to access the symbol libraries.

Part 2: Known as the *Symbol Libraries*. Symbol libraries include the catalog data and symbol data that PSPlace accesses. This is the manufacturer specific data.

You must install PSPlace on every computer. However, the symbol libraries (catalogs and symbols) can be installed on a shared drive or a network drive. PSPlace and the Symbol Libraries can be downloaded from our website at www.projectmatrix.com/downloads.html.

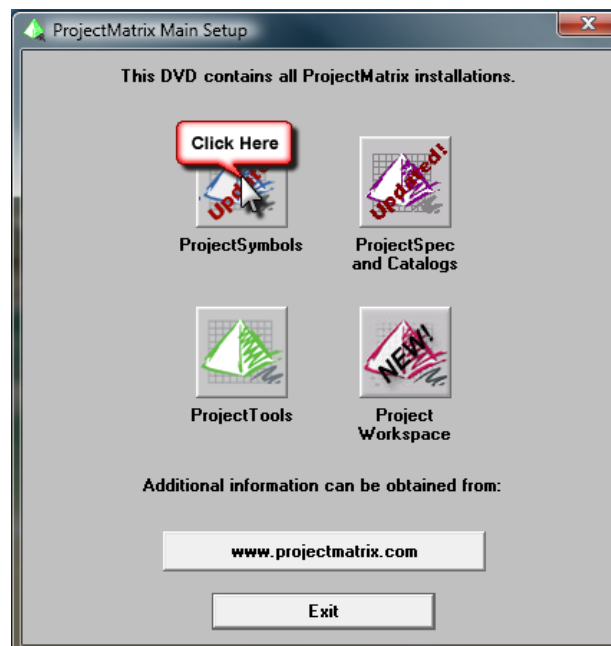
Authorization Code

You must call ProjectMatrix at 513.554.1665 to get your license code for ProjectSymbols. You will have to enter your authorization code the first time you run the program. This code will be valid for one year. You will get a warning 30 days in advance that your license code is going to expire.

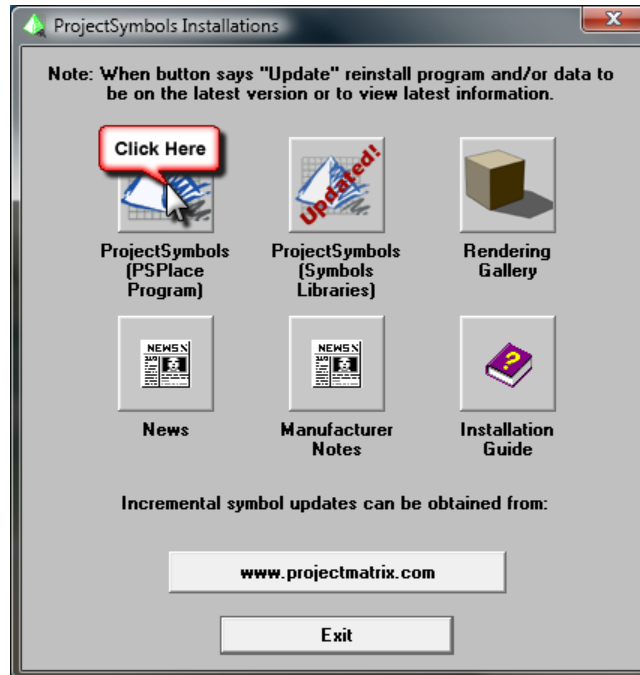
Installing PSPlace

This section will cover installing the PSPlace program that is used within AutoCAD.

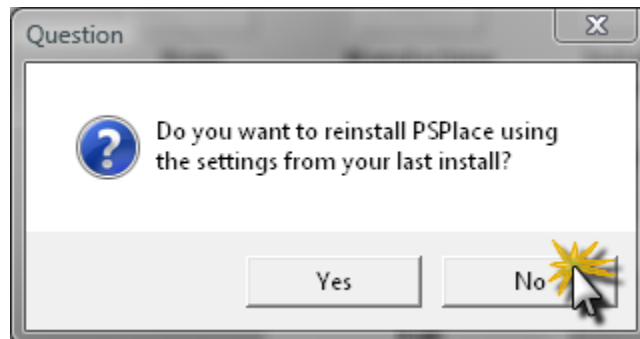
1. First, make sure AutoCAD is closed and your DVD is in the DVD drive.
2. The first screen that pops up should look like this. Click on the button labeled "ProjectSymbols".



3. On the next screen, click on the button labeled “ProjectSymbols (PSPlace Program)”.

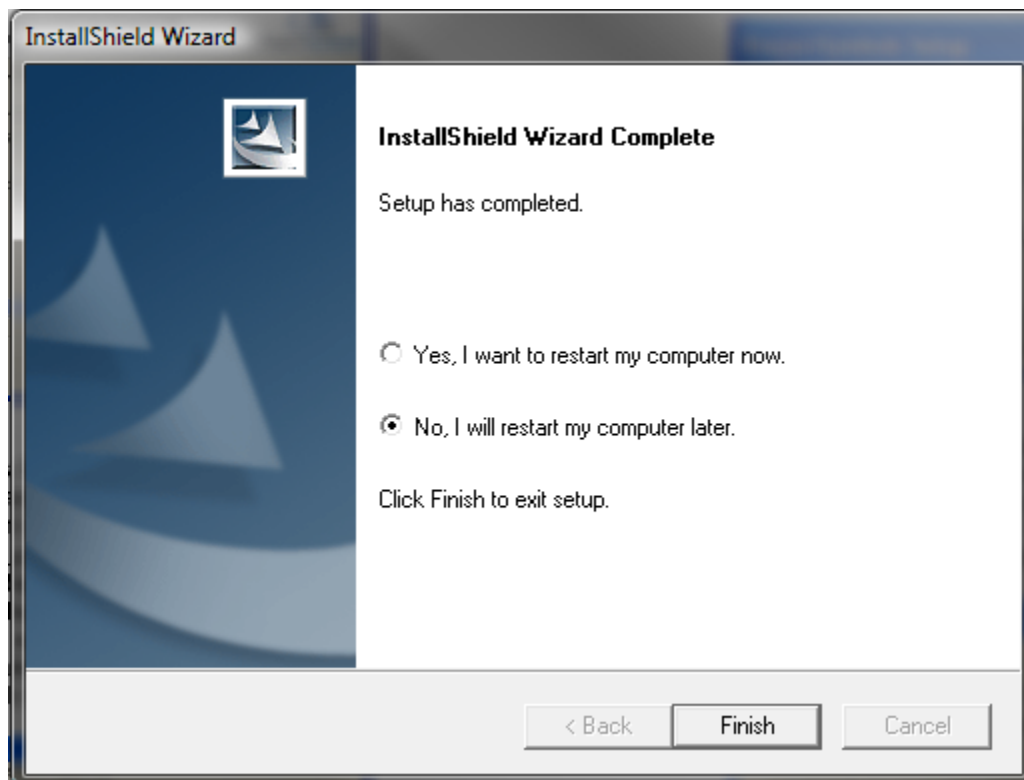


4. You may now be prompted with a “Question” dialog box. Click “No”. This is very important.



5. Now the Installation Wizard will begin. Click Next.
6. In the License Agreement dialog, click **Yes** in order to continue.
7. In the next dialog, select which version(s) of AutoCAD you want PSPlace to work with. If your symbols are (going to be) installed on a network drive, please click on the checkbox for that option. When you have made your selections, click “Next”.
8. You should now be at the PSPlace for AutoCAD Destination screen. You want to make sure you leave the Destination Folder set to the default. This is the destination for the actual program, not the symbols, and it must be installed locally on each computer. Click “Next” to continue.

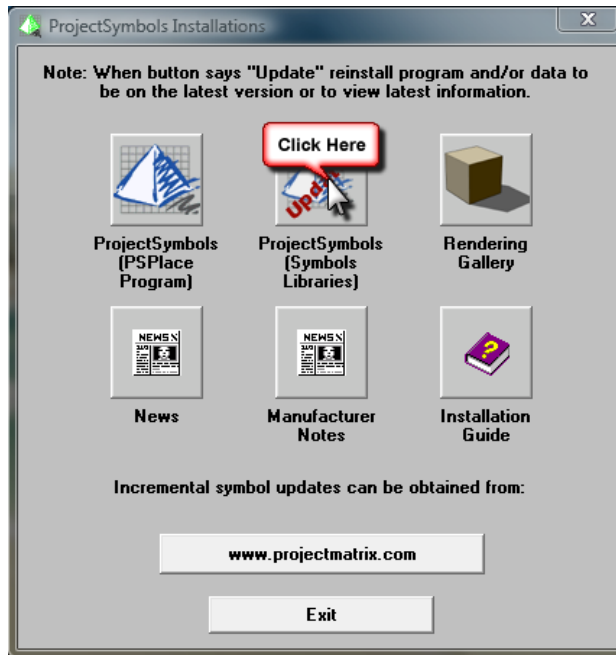
9. If you selected both the “2004/2005/2006” and the “2007/2008/2009” versions of AutoCAD, you will be taken to one more Destination screen. Click “Next” without changing the Destination Folder.
10. In the next dialog, “Start Copying Files”, review the paths and verify that they are correct. Then click “Next”.
11. Allow the “Setup Status” to complete and give you the “InstallShield Wizard Complete” dialog. Click “Finish” to close to Wizard.
12. It will display a small box for a few moments that says it is installing HASP program files, and then the “InstallShield Wizard Complete” dialog will return. It is not necessary to restart your computer at this time. Choose “No, I will restart my computer later.” Click “Finish”.



You have now successfully installed PSPlace for AutoCAD. The next step is to install the Manufacturer Symbol Libraries.

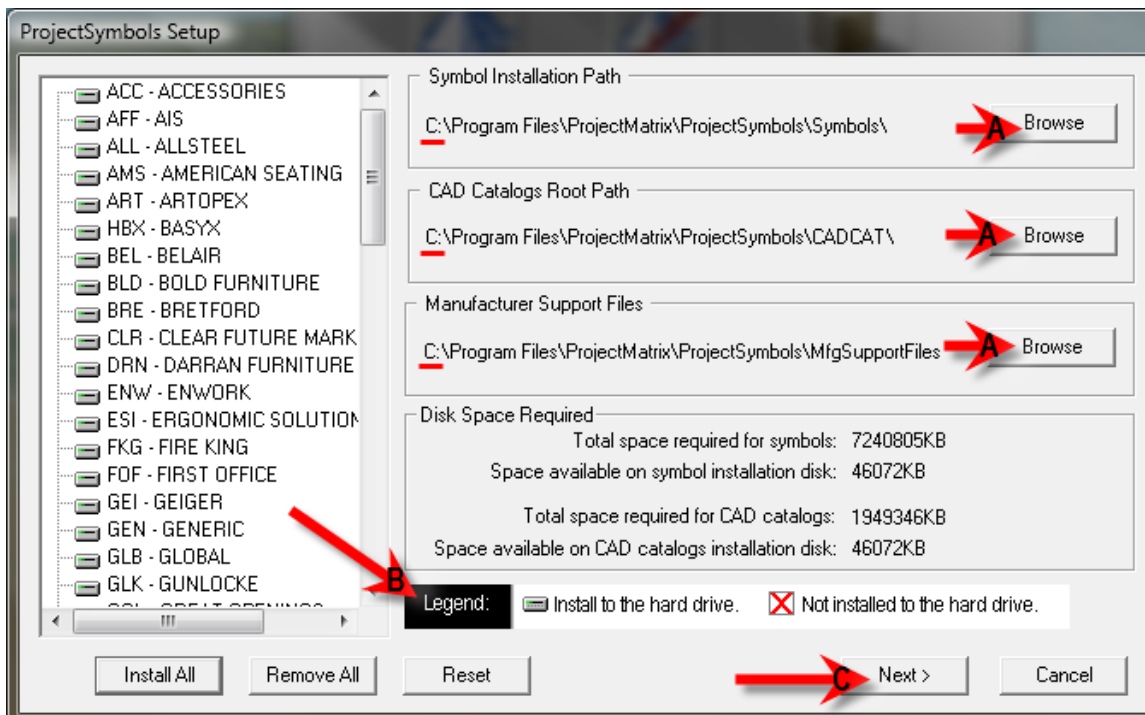
Installing Manufacturer Symbol Libraries

1. Make sure AutoCAD is still closed.
2. You should still have two menus open from the DVD. Return to the one titled “ProjectSymbols Installations” that looks like the one below, and this time you are going to select “ProjectSymbols (Symbol Libraries)”.



The installation wizard will begin.

3. On the Welcome screen, click “Next”.
4. Review the License Agreement and choose “Yes” to continue.
5. This next screen is the “Symbols Update Information” which explains what is new since the last posted update. Review this and then click “Next”.
6. Now you should see a screen like this:



- A:** If you are installing your symbols on a network follow these steps:
1. Open “My Computer” and double click on your network drive.
 2. Create a “ProjectMatrix” folder.
 3. Create a “ProjectSymbols” folder inside of the ProjectMatrix folder.
 4. Inside the ProjectSymbols folder, create 3 subfolders: CADCAT, MfgSupportFiles, and Symbols.
 5. Return to the installation screen and click “Browse” to redirect the path to the appropriate folders on your network.
- B:** Follow this legend. If there is a red “X” next to the manufacturer name on the left, then it will not be installed. To change it to a gray hard drive simply click on it or select “Install All” in the bottom left.
- C:** When you have verified that everything is correct, click “Next”.
7. Verify that the paths are correct, then click “Finish”.
 8. The symbols will begin installing. When they are finished you will receive the message “ProjectSymbols Setup complete”. Click “OK”.
 9. In the next dialog, click “Finish”, and then choose “No, I will restart my computer later” and click “Finish” to exit setup.

NOTE:

ProjectSymbols Lite is a limited feature version of ProjectSymbols. This is a FREE tool offered to A&D firms as well as end users. This is not for dealers. This gives you the capability to place 2D manufacturer specific symbols in a drawing and to create SIF files for all or part of a drawing. Current ProjectMatrix customers and manufacturers may provide this free software and its CAD libraries to their external design firms and customers.

Drawings created with ProjectSymbols or ProjectSymbols Lite are 100% compatible with each other.