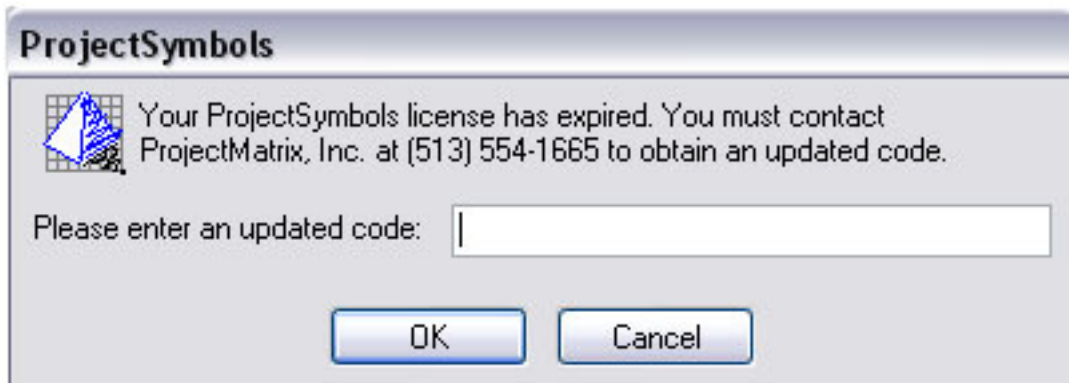


Getting Started with
ProjectSymbols LiteTM

Getting Started With ProjectSymbols Lite

Once you have completed the installation for ProjectSymbols Lite, start up AutoCAD.

You will be prompted to type in your ProjectSymbols License Code.



If you are using ProjectSymbols Lite and have not received a code then you'll need to go to our website and request a free one. The link is provided below, or you can type the address into your browser.

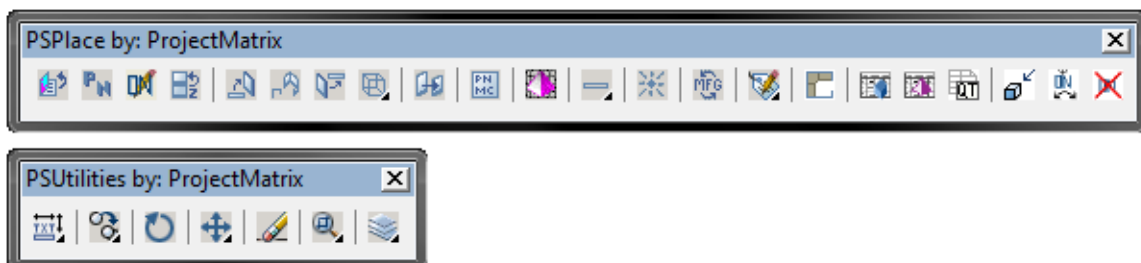
www.projectmatrix.com/code_request/index.php

After you have successfully typed in your license code, click the OK button to proceed. You will now have a "Select Manufacturer" window open in your AutoCAD workspace. Please highlight the manufacturer you wish to work with and click the OK button.

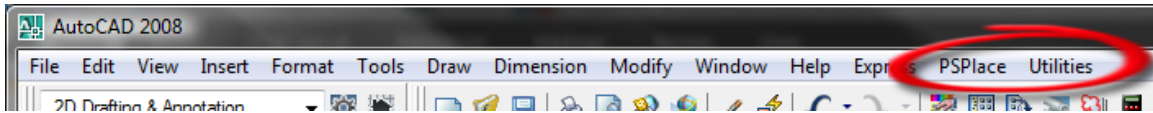
****Note:** You must select a manufacturer and press OK to continue or select cancel. If you press the OK button with no Manufacturer highlighted your program may lock-up.

****Note:** If this window is empty then there are no symbols libraries currently installed. Please press the cancel button. Manufacturer symbol libraries can be downloaded from the ProjectMatrix website. <http://www.projectmatrix.com/downloads.html>

You should see two new toolbars that are currently detached and are floating in your AutoCAD workspace.



Drag these new toolbars to the top of your workspace and the toolbar window should slightly change size to show that it is now ready to be docked. Place the new toolbars anywhere you like among your AutoCAD tools but please make sure that all of the tool buttons are visible. You should also now have two new pull-down menus added to your existing AutoCAD menus.



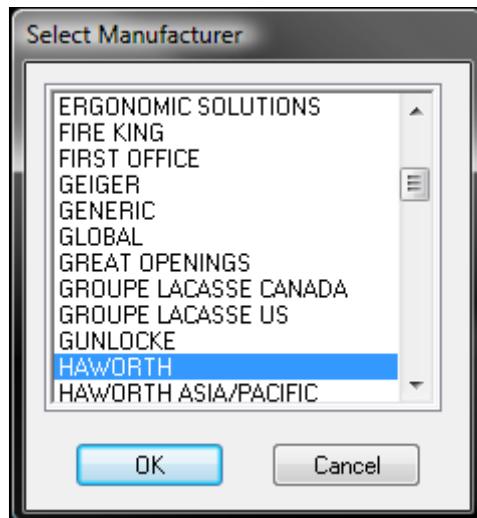
Alright, now that we have made sure all of the ProjectSymbols tools are installed correctly let's start out by placing some symbols into your drawing. For teaching purposes only, we are going to place a symbol from the Haworth symbol library. To load the Haworth symbol library click the "Change Manufacturer" button.



The "Select Manufacturer" window will pop up. Highlight HAWORTH and click the OK button. If this is not in your list then you need to add the Haworth symbol library to your computer. You can add the library from our website. If you need any help doing so please see the "Downloading and Installing ProjectSymbols / ProjectSymbols Lite" document on our website.

<http://www.projectmatrix.com/support.html>

**For this example we are going to go through two different ways to place the same symbol with our ProjectSymbols tools.

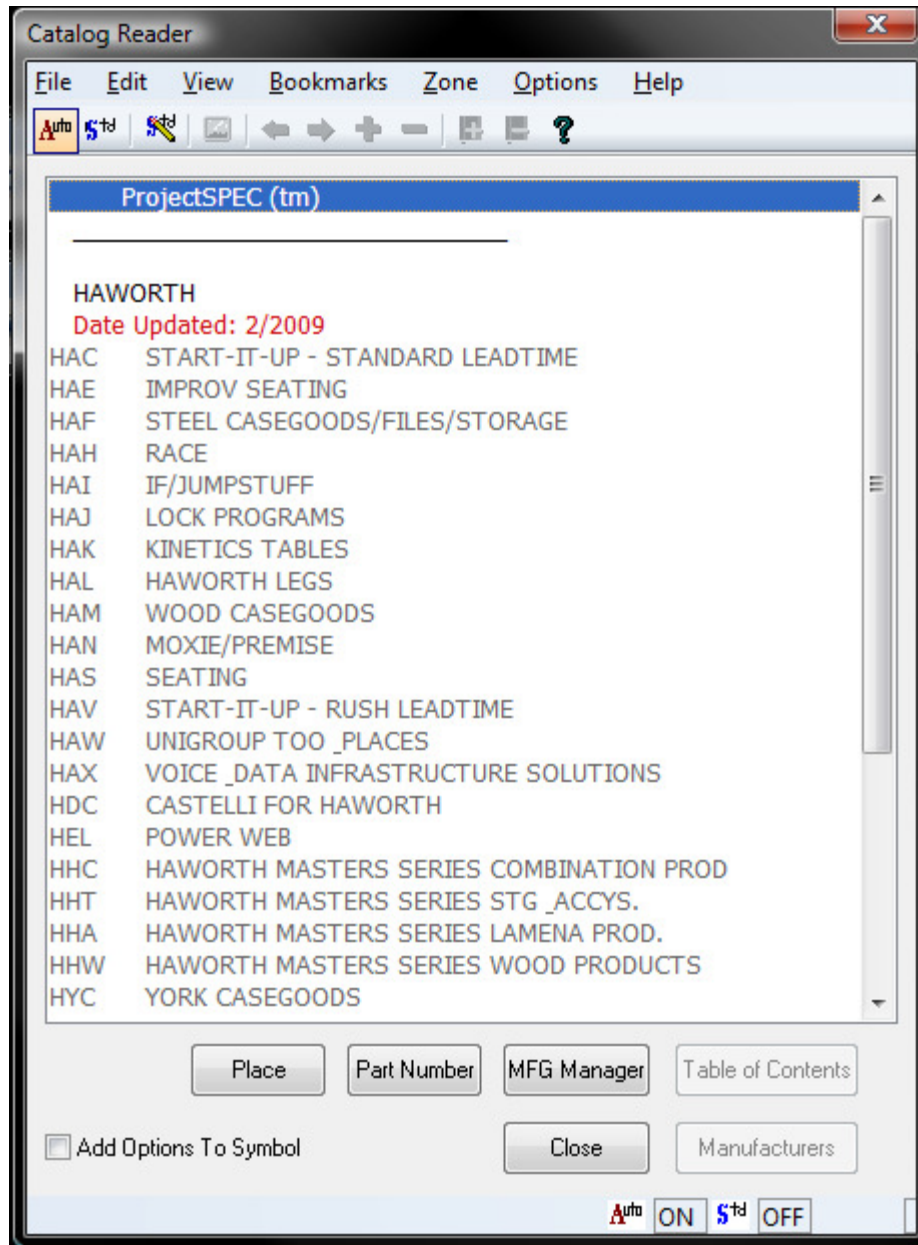


How to place a symbol using the Catalog Viewer

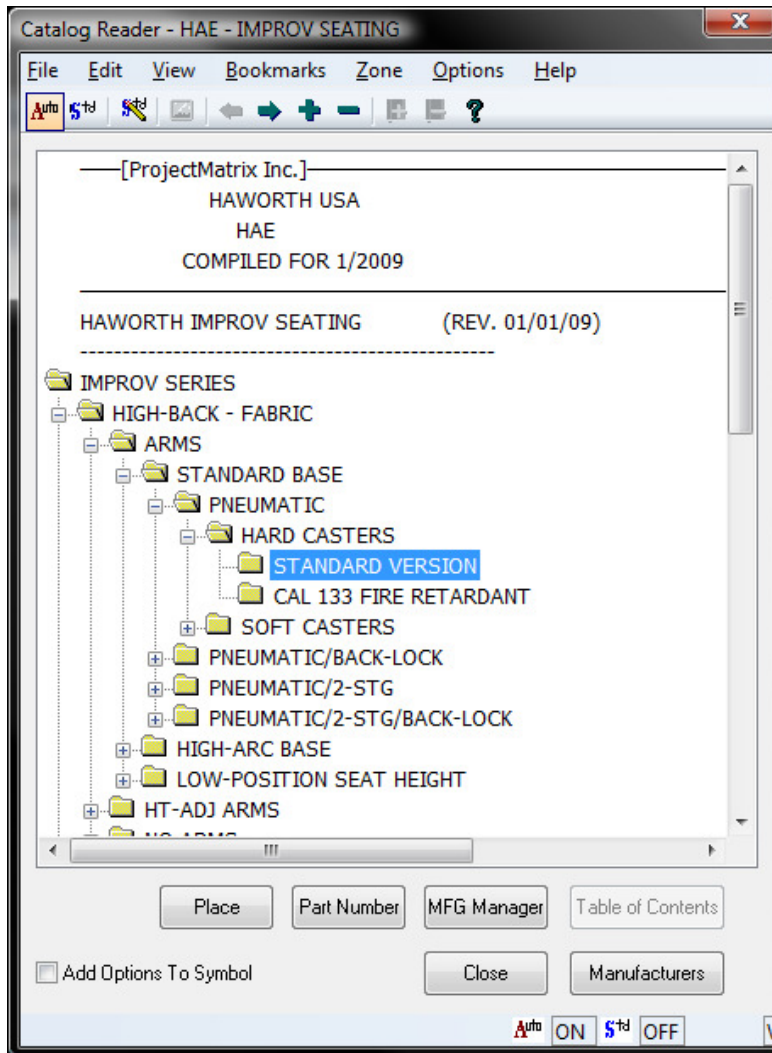
To place a new symbol, click the Place Symbol by Catalog Viewer button.



Once you click this button the Catalog Viewer will open.



To get to the part you wish to place, double-click the product line you will be working with under the available libraries section at the top. For this example we are going to double-click HAE - IMPROV SEATING. This will open all of the available products in this particular product line. Just to keep things simple, double-click the top option each time for this chair symbol. The sequence should be...



Your window should now be showing you some part numbers. Double-click M221-1142.

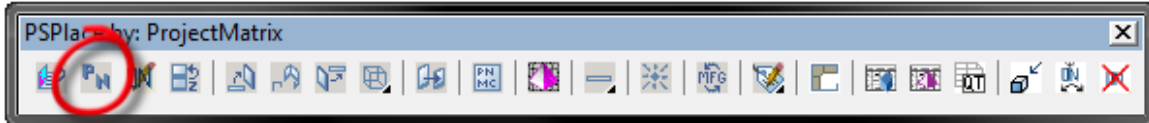
You should now have the chair symbol that we selected attached to your cursor. Click a spot on the screen where you wish to place the symbol. Now the symbol is placed and you can rotate it to the angle in which you wish to display it. Left-click again and you have completed placing your first symbol. You will notice that your cursor is now attached to a new chair symbol. You can continue to add as many chairs to your drawing as you wish.

To get out of the command press the Enter key, Esc key or right-click with your mouse and you will be taken back to your Catalog Viewer window. To get back to your AutoCAD workspace click the "Close" button and the Catalog Viewer will close.

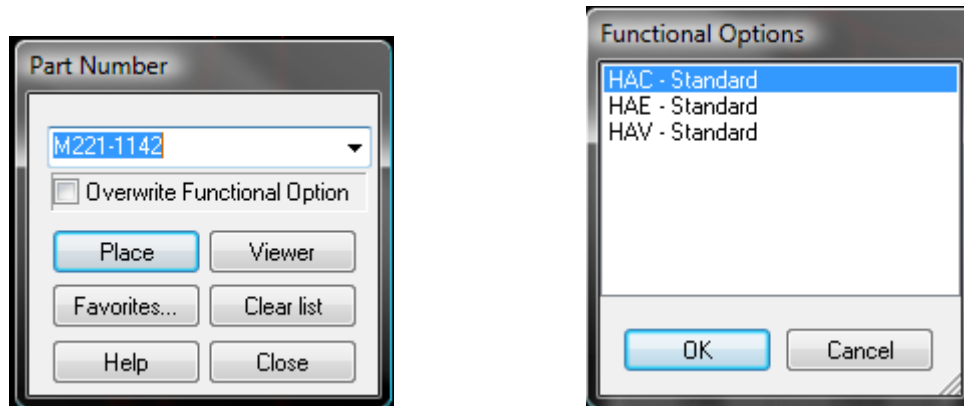
How to place a symbol using a known part number

*** (This feature is only available in the full version of ProjectSymbols)***

If you already know the part number of a symbol that you want to place, click on the Place Symbol by Part Number button.



This will bring up the Part Number window.



Type in M221-1142 and click the Place button. This will bring up the Functional Options window. Click the OK button and the window will disappear and you will have the symbol that we specified attached to your cursor. Click a spot on the screen where you wish to place the symbol. Now the symbol is placed and you can rotate it to the angle in which you wish to display it. Left-click again and you have completed placing your first symbol. You will notice that your cursor is now attached to a new chair symbol. You can continue to add as many chairs to your drawing as you wish. To get out of the command press the Enter key, the Esc key or right-click with your mouse and you will be taken back to your Part Number window. To get back to your AutoCAD workspace, click the "Close" button and the Part Number window will close.

NOTE:

ProjectSymbols Lite is a limited feature version of ProjectSymbols. This is a FREE tool offered to A&D firms as well as end users. This is not for dealers. This gives you the capability to place 2D manufacturer specific symbols in a drawing and to create SIF files for all or part of a drawing. Current ProjectMatrix customers and manufacturers may provide this free software and its CAD libraries to their external design firms and customers.

Drawings created with ProjectSymbols or ProjectSymbols Lite are 100% compatible with each other.