



**Downloading
and
Installing
ProjectSpec
from the
Internet**

Contents

About this guide	4
Technical Support	4
System Requirements	4
Before you begin	5
What is ProjectSpec?	5
Understanding Terminology	5
Authorization Code	5
Downloading ProjectSpec	6
Installing ProjectSpec	10
Downloading Manufacturer Electronic Catalogs	16
Installing the Electronic Catalogs	22

About this guide

This guide will help you

- understand what ProjectSpec is
- download ProjectSpec
- install ProjectSpec
- download a manufacturer's electronic catalogs
- install a manufacturer's electronic catalogs

All the images in this guide were created using Windows XP and Internet Explorer 6. Hence, the look of these images compared to the ones on your computer may be slightly different.

Technical Support

You can reach technical support in the following ways.

Phone: 513.554.1665

Fax: 513.554.1255

e-mail: support@projectmatrix.com

website www.projectmatrix.com

System Requirements

- Operating System:** Windows 98, NT SP5, 2000 or XP
CPU: Pentium / 100 MHz (minimum)
RAM: 64 MB (minimum)
Hard Drive: 50 MB (free space depending on symbols installed)
Resolution: 800 x 600 / 256 colors (minimum)

Before you begin

What is ProjectSpec?

ProjectSpec is a specification software package for the contract furniture industry that allows you to quickly create a parts list with options, prices, and discounts. You can easily produce bids and proposals for customers. You can visit our website (www.projectmatrix.com) to see a listing of all the manufacturers that are supported in ProjectSpec.

Understanding Terminology

ProjectSpec is made up of two parts. You must download and install both parts.

Part 1: Known as ProjectSpec. ProjectSpec is the actual program that the user interacts with. Some functionality includes searching for parts, optioning and discounting. ProjectSpec saves a .SIF (Standard Interface Format) file.

Part 2: Known as the Electronic Catalogs. The electronic catalogs are the catalog data that ProjectSpec accesses. This is the manufacturer specific data.

You must install ProjectSpec on every computer. However, the electronic catalogs can be installed on a shared drive or a network drive. ProjectSpec and the electronic catalogs can be downloaded from our website at www.projectmatrix.com.

Authorization Code

You must call ProjectMatrix at 513.554.1665 to get your ProjectSpec authorization code. This authorization code will be valid for one year. 30 days prior to your authorization code expiring, you will get a warning that your authorization code is going to expire.

You will have to enter your authorization code the 1st time you run the program.

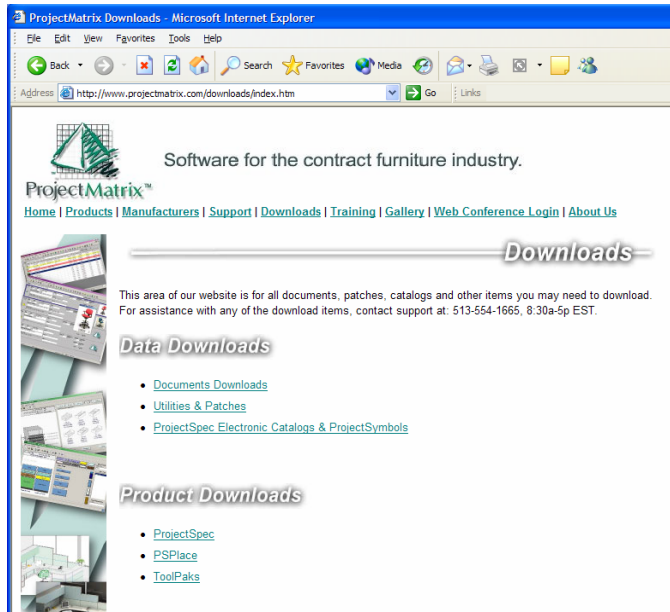
Downloading ProjectSpec

This section will walk you through downloading ProjectSpec. We will cover downloading manufacturer electronic catalogs later. The following images may look different depending on the browser you are using and the version of Windows you have. These images were created with Windows XP and Internet Explorer 6. These images are to be used as a general reference only, due to the updating of our website.

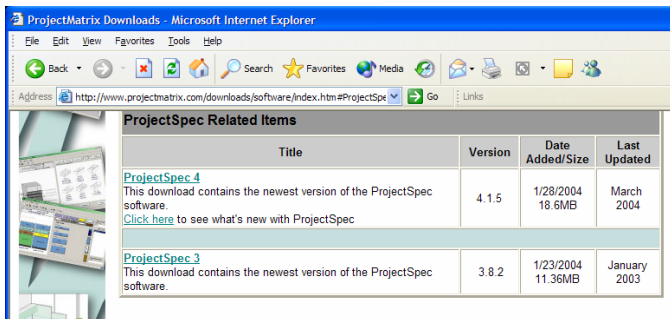
1. Launch your internet browser and enter www.projectmatrix.com.
2. Click on **Downloads**.



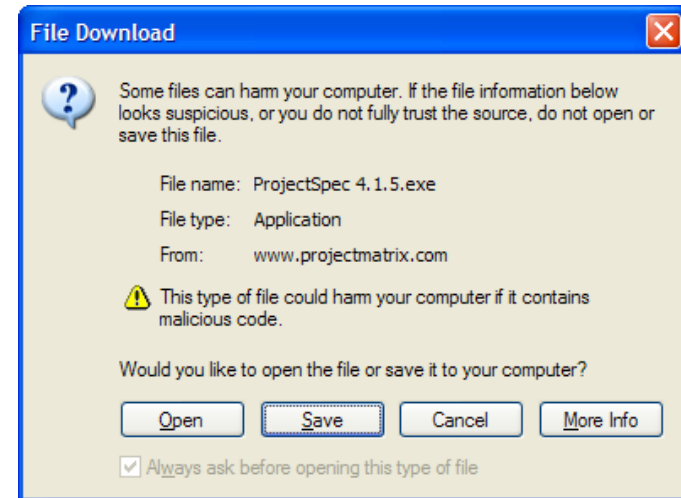
3. Click on **ProjectSpec** under Product Downloads.



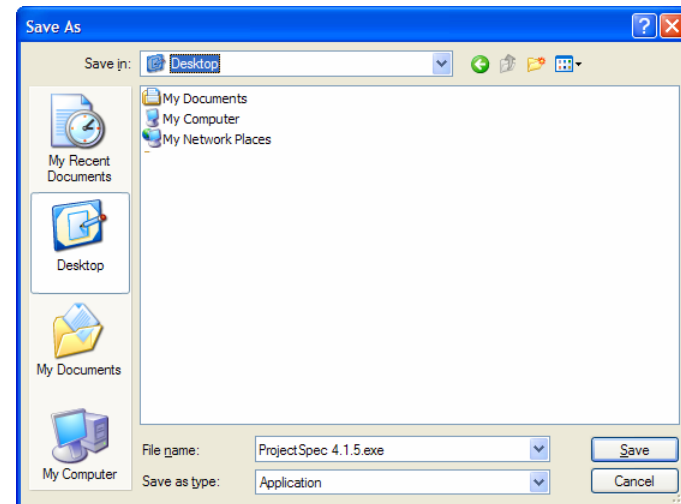
4. Click on **ProjectSpec 4.**



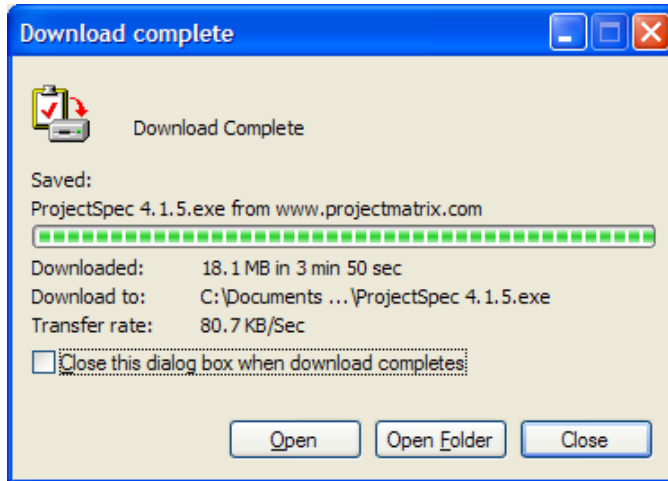
5. Click **Save**. This will save the installation routine to your computer.



6. Browse to your Desktop and click **Save**. This will save the install routine to your desktop. You will need to be able to find the install routine once it is downloaded to your computer.



7. Click **Close**. The download is now complete.



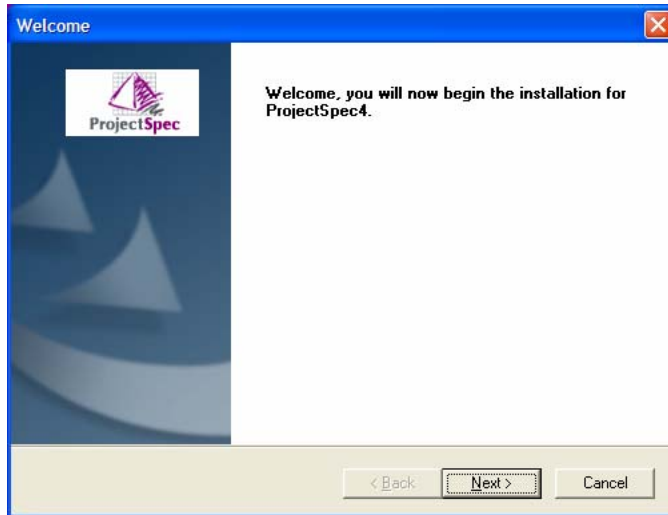
Installing ProjectSpec

This section will walk you through installing ProjectSpec. If you are running Windows 2000 or XP you must log on to Windows as a “power user” or “administrator”.

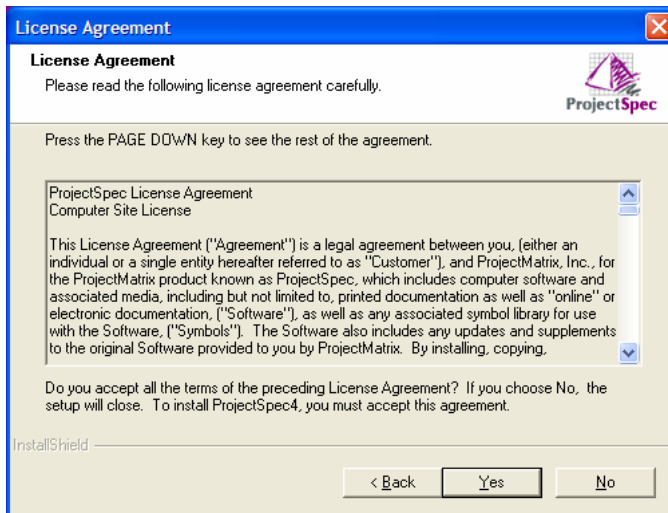
1. Double click on the installation routine that you just downloaded to your desktop. This will start the setup routine.



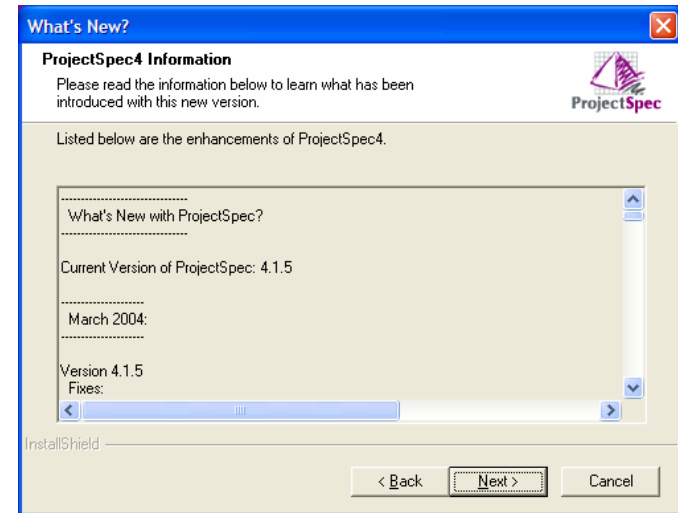
- In the Welcome screen dialog, click **Next** to continue.



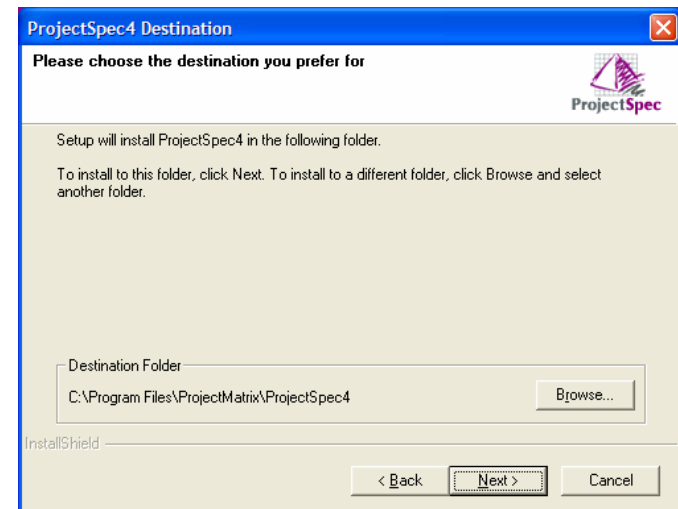
- In the License Agreement dialog, click **Yes** to continue.



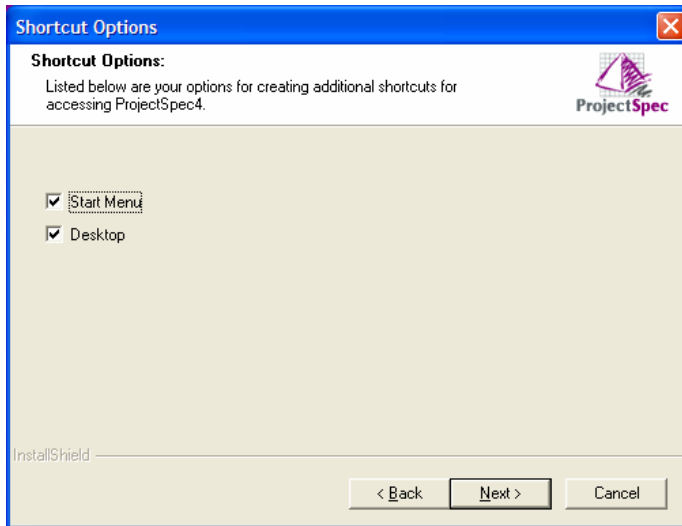
- In the What's New? dialog, please read what's new with the latest release and then click **Next** to continue.



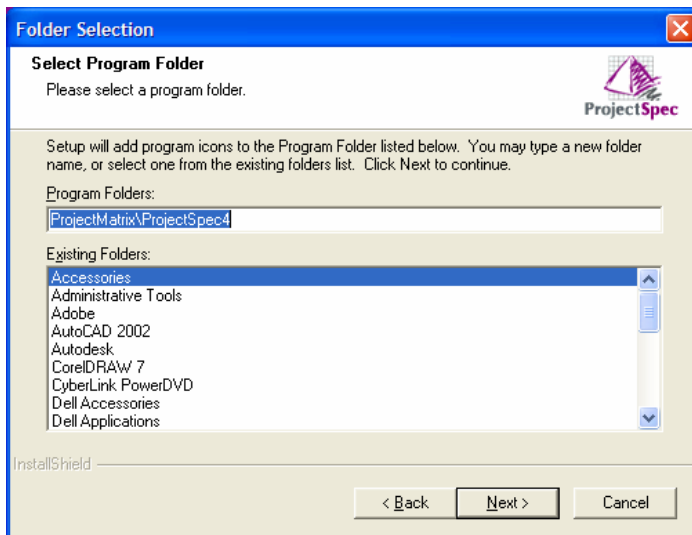
- In the ProjectSpec4 Destination dialog, you can change the installation folder for ProjectSpec. To do this, click Browse and select the folder you want to install ProjectSpec to. To accept the default location, click **Next**.



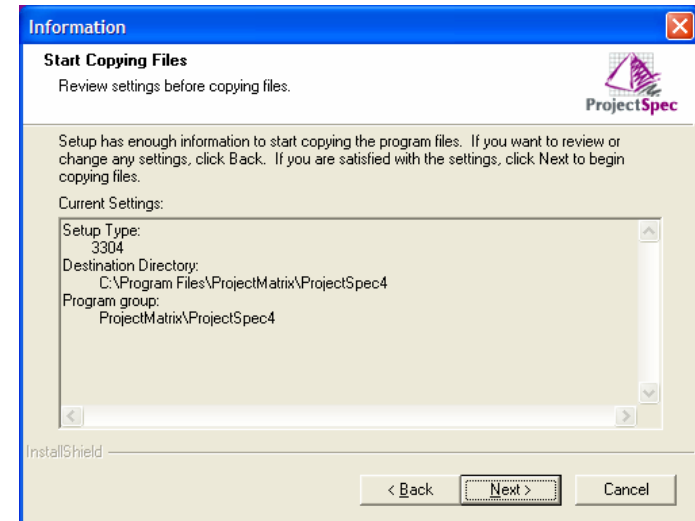
- In the Shortcut Options dialog, click **Next** to create a shortcut to ProjectSpec on your Start Menu and your Desktop.



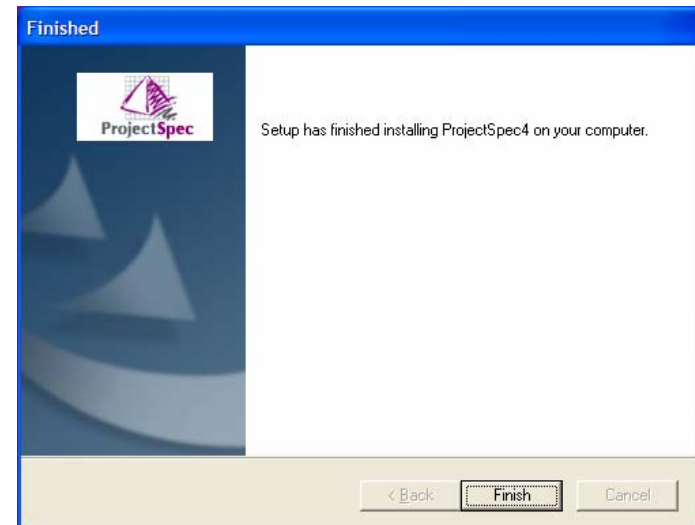
- In the Folder Selection dialog, click **Next**.



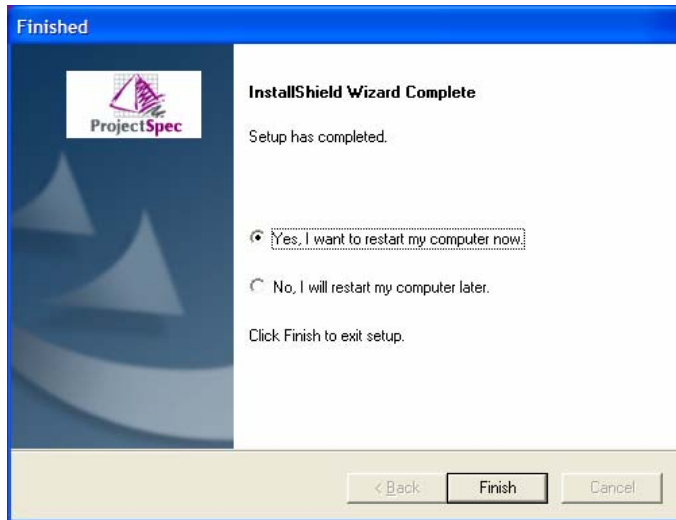
- In the Information dialog, click **Next** to install ProjectSpec.



- In the Finished dialog, click **Finish**.



10. In the 2nd Finished dialog, select **Yes, I want to restart my computer now**. Once you select this, click **Finish**.



The ProjectSpec installation is now complete. Updates to ProjectSpec are available via our website at www.projectmatrix.com.

You may also delete or archive the installation routine that is saved on your Desktop. This file is no longer needed.

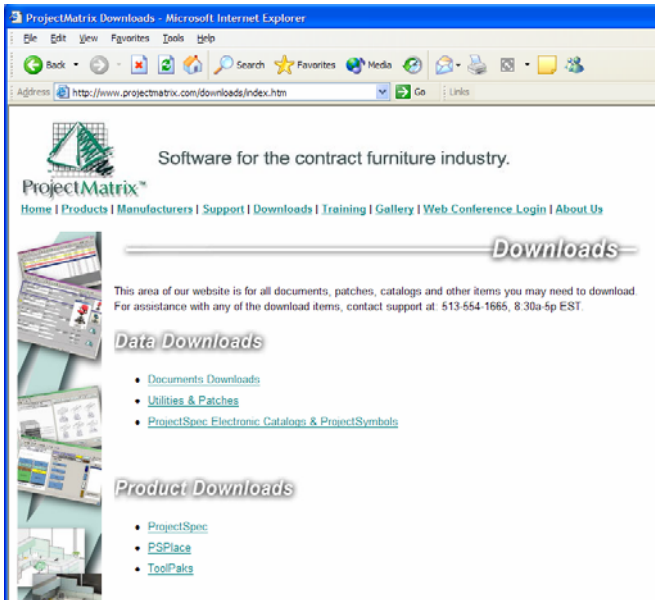
Downloading Manufacturer Electronic Catalogs

This section will walk you through downloading manufacturer electronic catalogs to use with ProjectSpec. The following images may look different depending on the browser you are using and what version of Windows you have. These images were created with Windows XP and Internet Explorer 6. These images are to be used as a general reference only, due to the updating of our website.

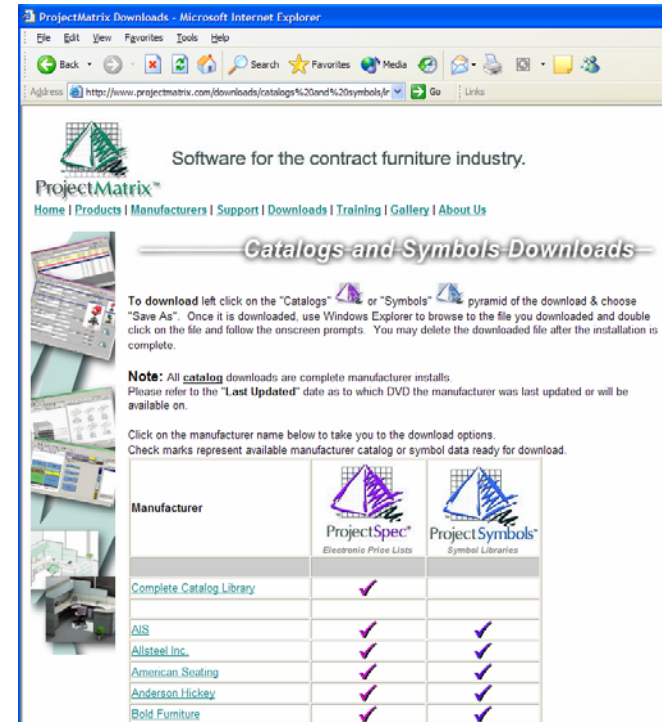
1. Launch your internet browser and enter www.projectmatrix.com.
2. Click on **Downloads**.



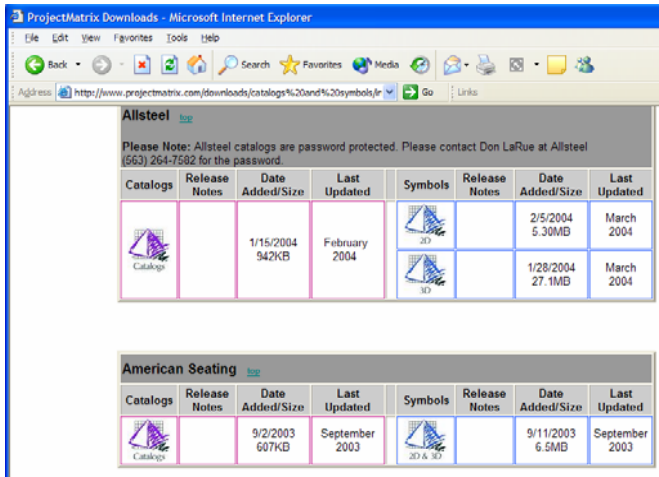
- Click on **ProjectSpec Electronic Catalogs & ProjectSymbols** under Data Downloads.



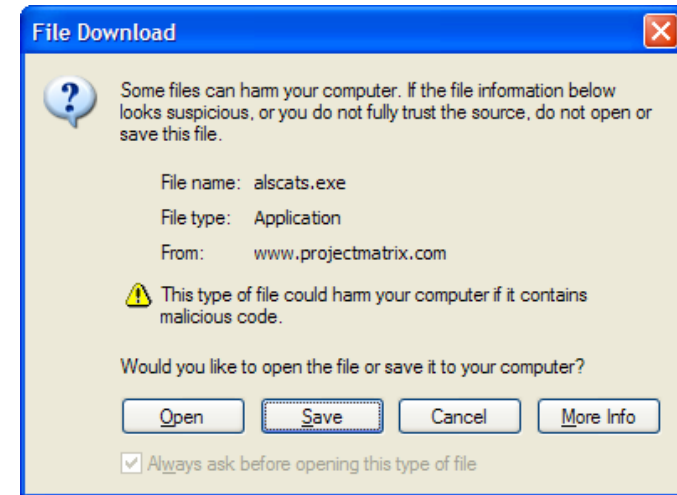
- Under Manufacturers select the manufacturer you want electronic catalogs for. If there is not a check box under ProjectSpec then either that manufacturer does not have updates available or they do not have electronic catalogs available. For demonstration purposes we will click on **Allsteel Inc.** You can select whichever manufacturer you like. You must repeat this step for each manufacturer you want.



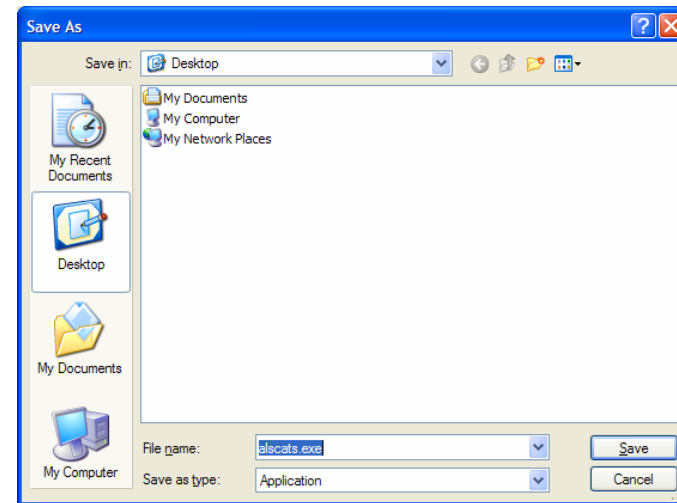
- For demonstration purposes we will click on the **Catalogs** purple pyramid under Allsteel.



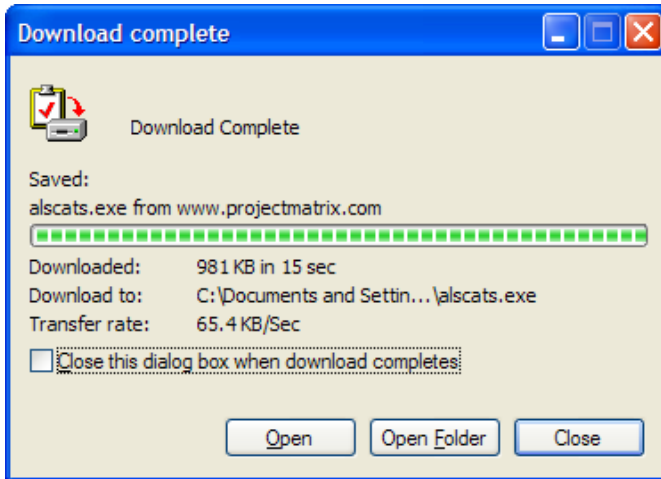
- Click **Save**. This will save the installation routine to your computer.



- Browse to your Desktop and click **Save**. This will save the install routine to your desktop. You will need to be able to find the installation routine once it is downloaded to your computer.



8. Click **Close**. The download is now complete.



Repeat these steps for all the manufacturer electronic catalogs you need.

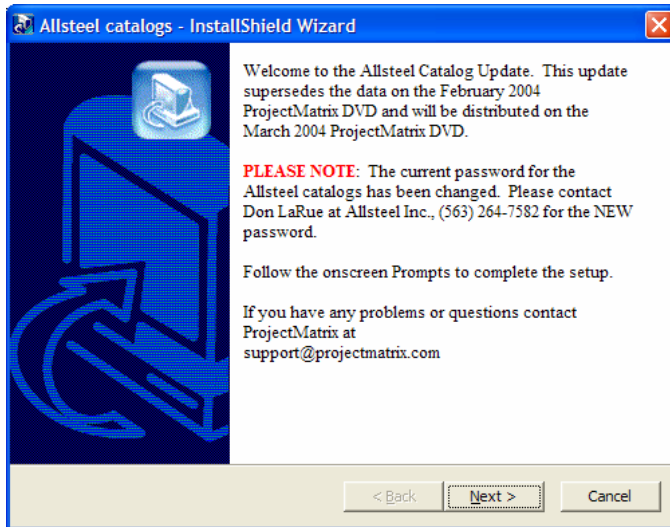
Installing the Electronic Catalogs



This section will walk you through installing the manufacturer electronic catalogs. If you are running Windows 2000 or XP you must log on to Windows as a "power user" or "administrator".

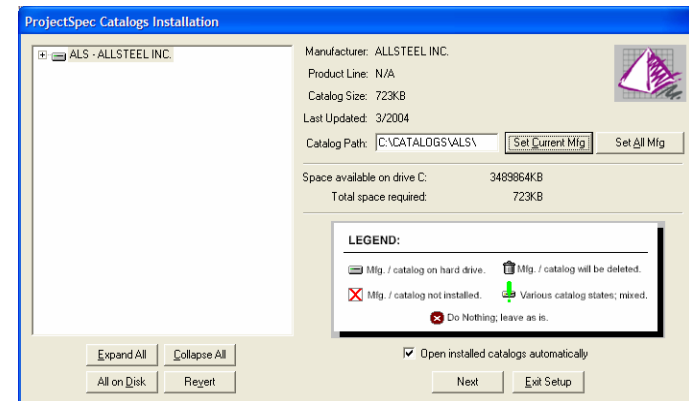
1. Double click on the installation routine that you just downloaded to your desktop. This will start the setup routine.



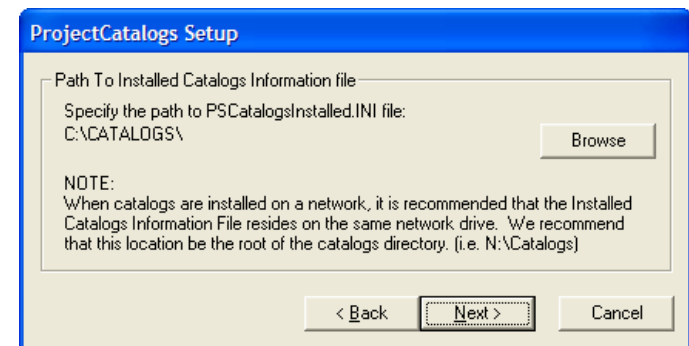
- In the InstallShield Wizard dialog, please read and then click **Next** to continue.



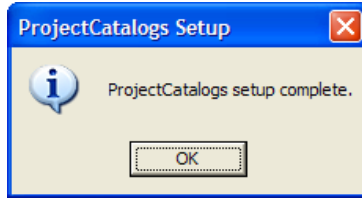
- In the ProjectSpec Catalogs Installation dialog, make sure to select which manufacturers you want to install. To change a manufacturer's status click on the icon to the left of the manufacturer. A  icon means that manufacturer will be installed. A  icon means that manufacturer will not be installed. You can also change the installation folder for the Catalog Path. To change the installation folder, select Browse and select the folder you want these to be installed to. Click **Next** to continue.



- In the ProjectCatalogs Setup dialog, you can change the installation folder for the PSCatalogsInstalled.INI. It is recommended that this file be installed to the same location as the electronic catalogs. To do this, click Browse and select the folder you want to install PSPlace to. To accept the default location, click **Next**.



5. In this ProjectCatalogs Setup dialog, click **OK**.



The electronic catalog installation is now complete. Updates to this electronic catalog and other electronic catalogs are available via our website at www.projectmatrix.com.

You may delete or archive the installation routine that is saved on your Desktop. This file is no longer needed.



ProjectMatrix

11687 Lebanon Road
Cincinnati, Ohio 45241
Phone: 513.554.1665
Fax: 513.554.1255
www.projectmatrix.com